



Cre8Play specializes in the detail required to bring your animal friends to life. Realistic colors and textures have children wondering if our sculptures are real or not!



**Frog Climber**  
**1000227**

L: 5'-4" x W: 3'-10" x H: 3'-0"  
1,550 LBS

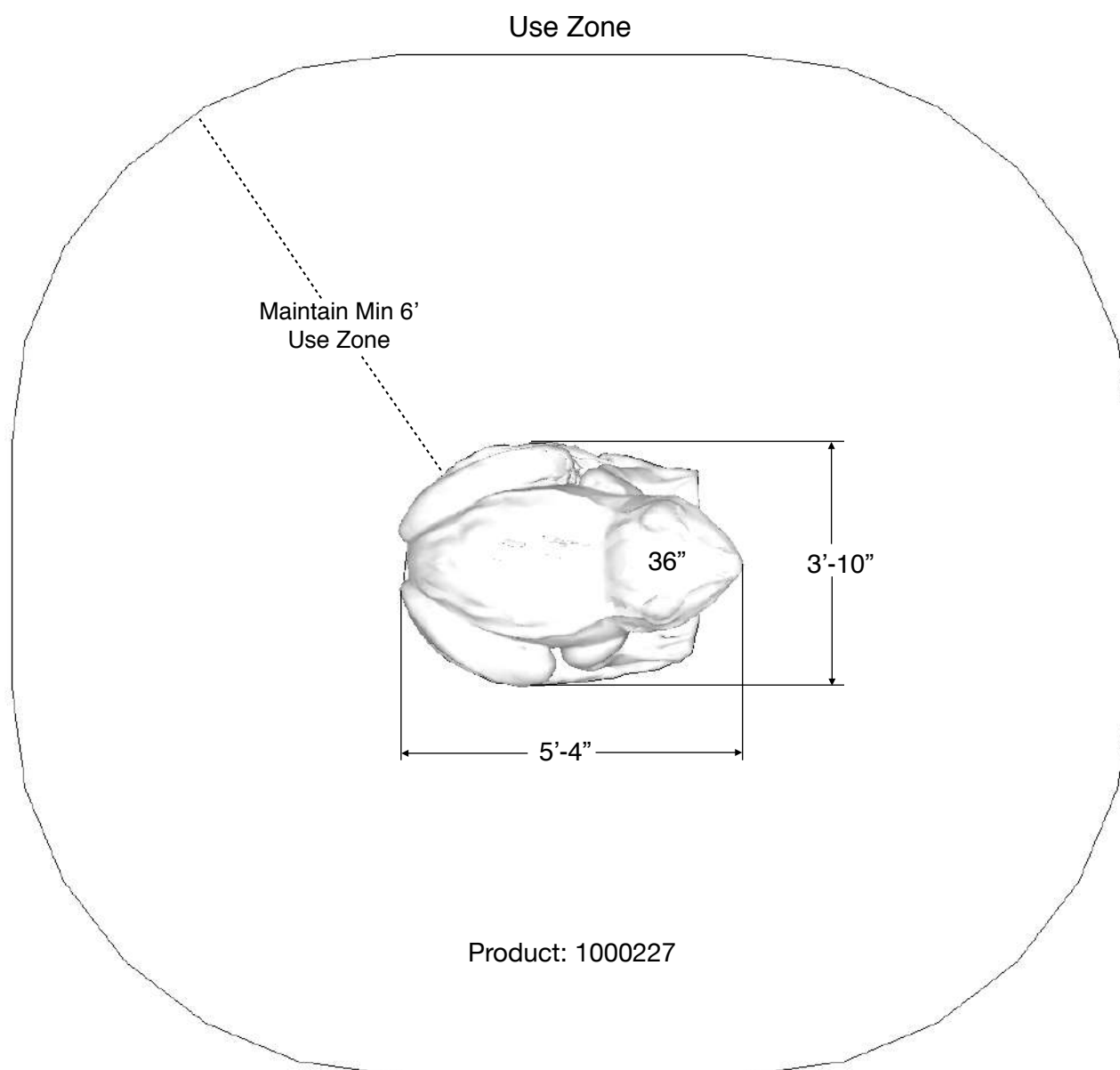
~ Dimensions and weights are approximate ~  
~ Heights shown with 12" surfacing ~  
**User Group Age: 2-12**

All images and concepts are Copyright © 2016, Cre8Play, LLC-All rights reserved. Cre8Play may change or modify this information as necessary and without notice.

Revised 4/18/16

5121 Winnetka Ave N • Suite 108  
New Hope, MN 55428  
612.670.8195  
info@cre8play.com  
cre8play.com

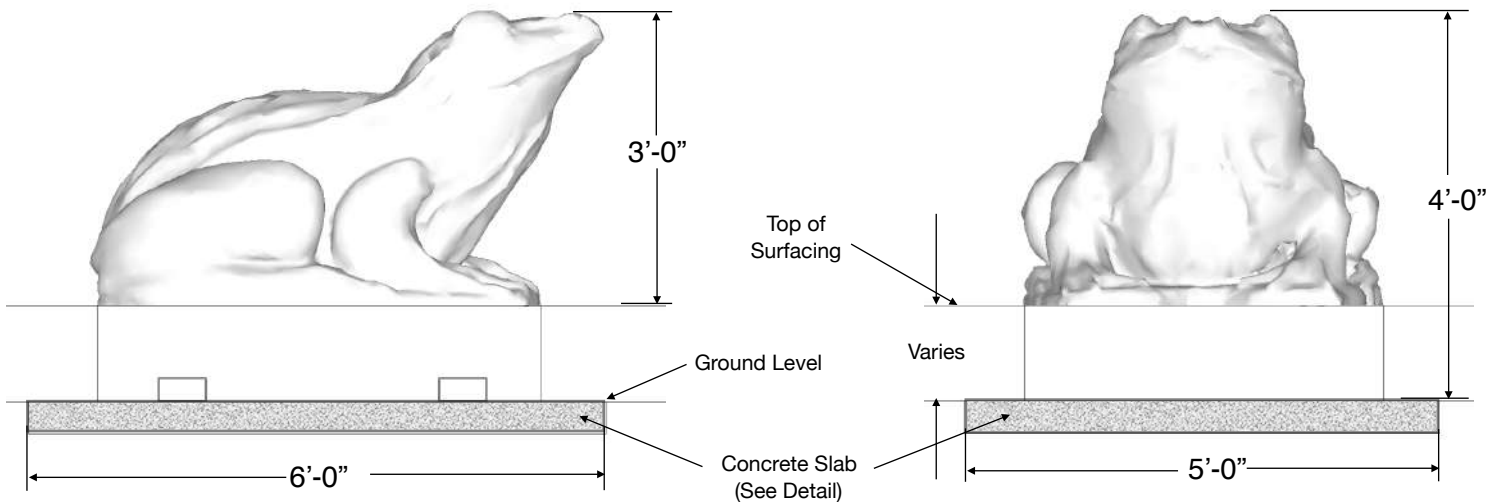
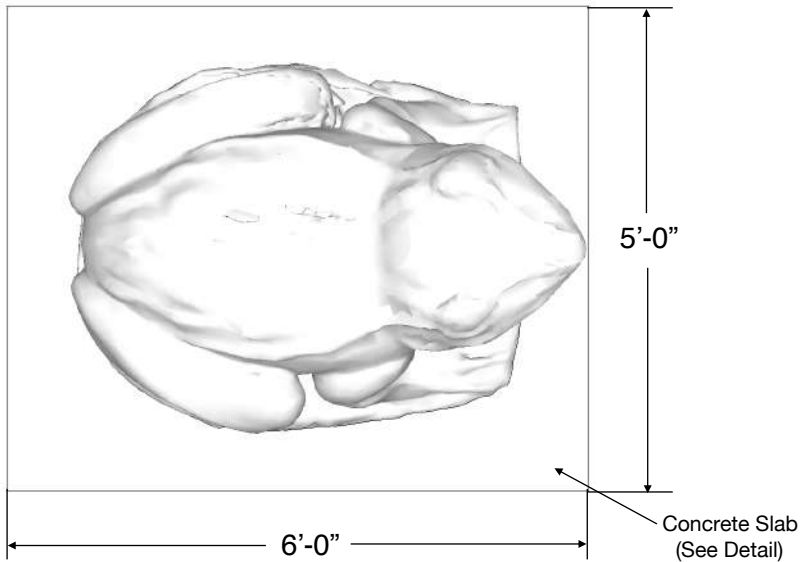
## Installation Instructions



### Included Items:

Item	Description	Quantity
Frog Climber	Play Equipment	1
Anchor Bolt 5/8" x 6"	Mounting Hardware	4

Installation Instructions



~ All dimensions are approximate ~

**User Group Age: 2-12**

Last Revised 6/19/17



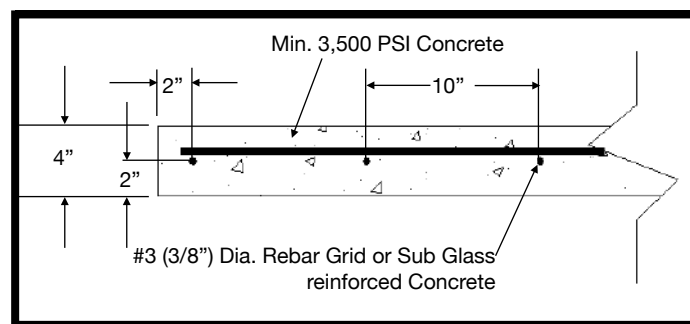
## Installation Instructions

**NOTE: Read installation instructions thoroughly before starting installation process.**

**Step 1:** Lay out the area and prepare the site for install. Concrete must be installed over a solid, level base. Check local soil condition and codes. See installation instructions for minimum use zone requirements to ensure proper spacing and adequate surfacing area.

**Step 2:** Pour a concrete base for the Frog Climber. Refer to the typical slab section on this page. The concrete should be flush with the ground level. Allow time for the concrete to completely cure before continuing.

**Step 3:** Using an appropriate lull-type forklift or boom, place the Frog Climber into final installation location. See the hardware recommendation page for information on anchoring equipment down to your slab. Refer to the surfacing manufacturer for installation of an approved impact attenuating play surface around the Frog Climber with a minimum of 6 feet in every direction.

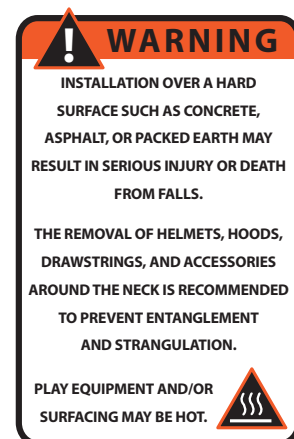


**Typical 4" Concrete Slab Section**

Check local soil conditions.  
(Not to Scale)

### NOTES PRIOR TO CONSTRUCTION:

- Use appropriate equipment to lift and move the play equipment.
- Check local codes and requirements prior to digging or installing any equipment.



## Installation Instructions

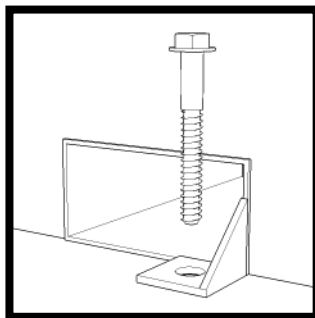
**Step 4:** Locate your anchor bolts, supplied by Cre8Play. Using the proper standard drill bit size noted in the installation table, drill the concrete to the appropriate hole depth (C).

**Step 5:** Insert the anchor bolt into the hole and tighten until the bolt is fully seated. Do NOT over tighten the anchor bolts.

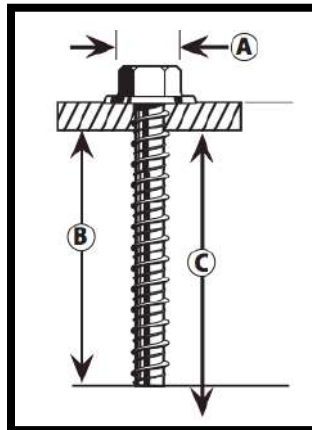
**Installation Table**

Anchor Bolt Size	ANSI Standard Drill Bit Diameter	Anchor Head (Socket Size) Diameter (A)	Minimum Embedment (B)	Hole Depth (C)
1/2" x 3"	7/16"	3/4"	2 1/2"	3 1/2"

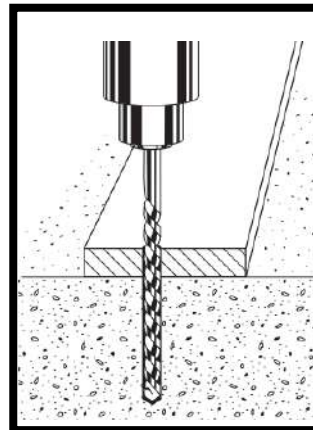
**Anchor Bolt (Large Diameter Tapcon) Installation:**



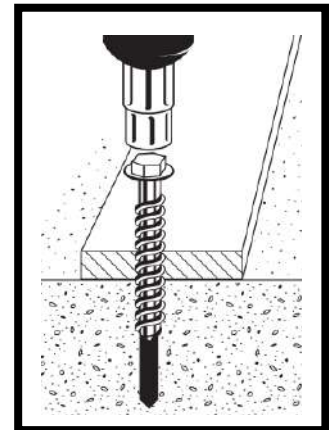
**Mounting Detail**  
(Not to Scale)



**Step 1: Drill**



**Step 2: Anchor**



**NOTE:** Always wear eye protection appropriate to the task at hand.