



When is it fun to step on critters? At the park of course. Kids can step and play on these critters all day long. Made of durable long-lasting Glass Fiber Reinforced Concrete (GFRC), our steppers will stand the test of time!



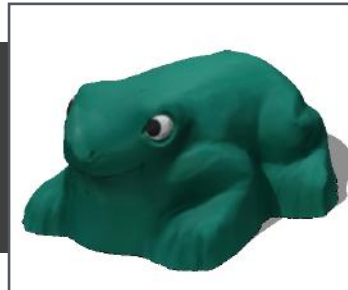
**Lady Bug Stepper**  
**1000092**

L: 2'-2" x W: 1'-7" x H: 1'-1"  
125 LBS



**Ant Stepper**  
**1000093**

L: 2'-3" x W: 1'-6" x H: 1'-0"  
125 LBS



**Frog Stepper**  
**1000221**

L: 1'-11" x W: 1'-6" x H: 0'-10"  
70 LBS

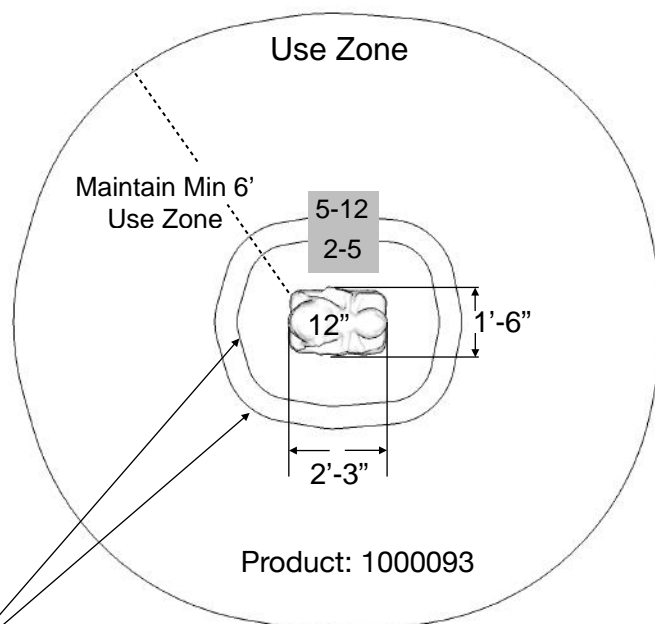
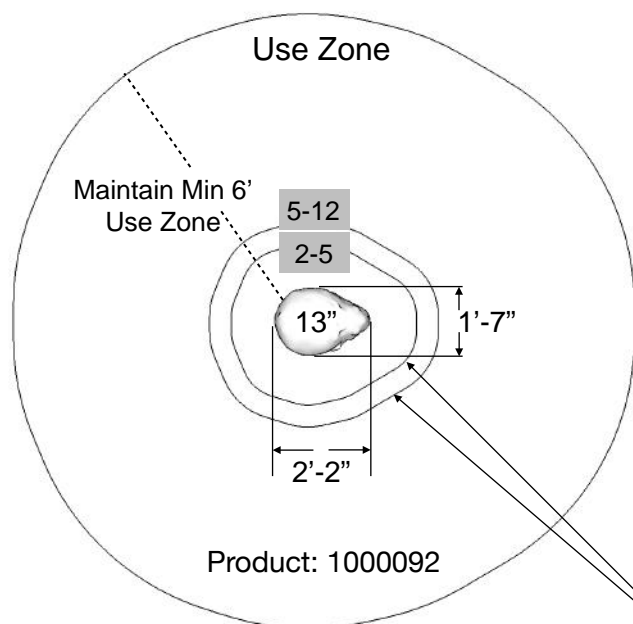


**Turtle Stepper**  
**1000222**

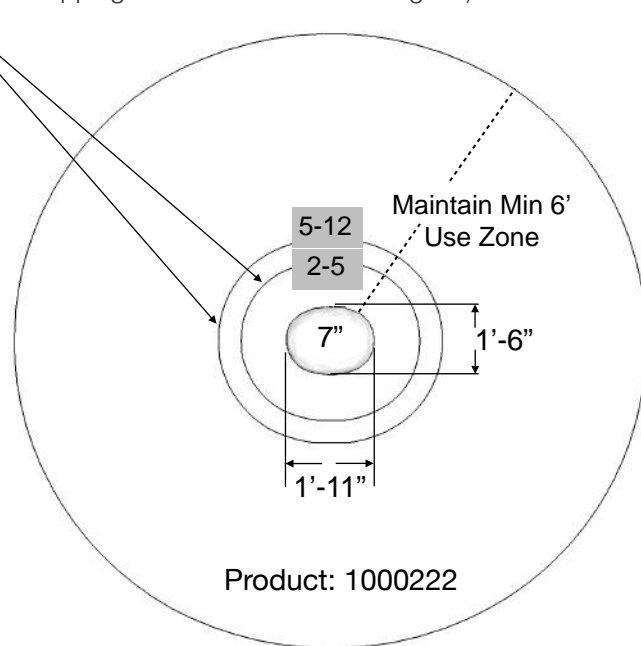
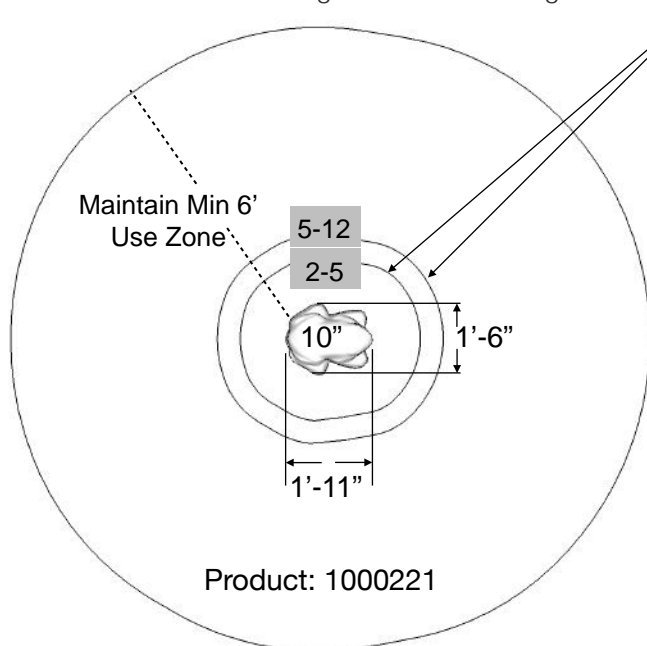
L: 1'-11" x W: 1'-6" x H: 0'-7"  
60 LBS

~ Dimensions and weights are approximate ~  
~ Heights shown from top of surfacing ~  
**User Group Age: 2-12**

## Installation Instructions



Stepping forms shall be no greater than 12 in. (300mm) apart when intended for use by 2 through 5-year-olds and no greater than 18 in. (460 mm) apart when intended for use by 5 through 12-year-olds. This dimension shall be measured edge to edge between the adjacent stepping surfaces. (This measurement will be horizontal when adjacent stepping forms are at the same height and it will be diagonal when adjacent stepping forms are at different heights.)



### Included Items:

| Item                  | Description       | Quantity |
|-----------------------|-------------------|----------|
| Stepper               | Play Equipment    | 1        |
| Anchor Bolt 1/2" x 3" | Mounting Hardware | 2        |

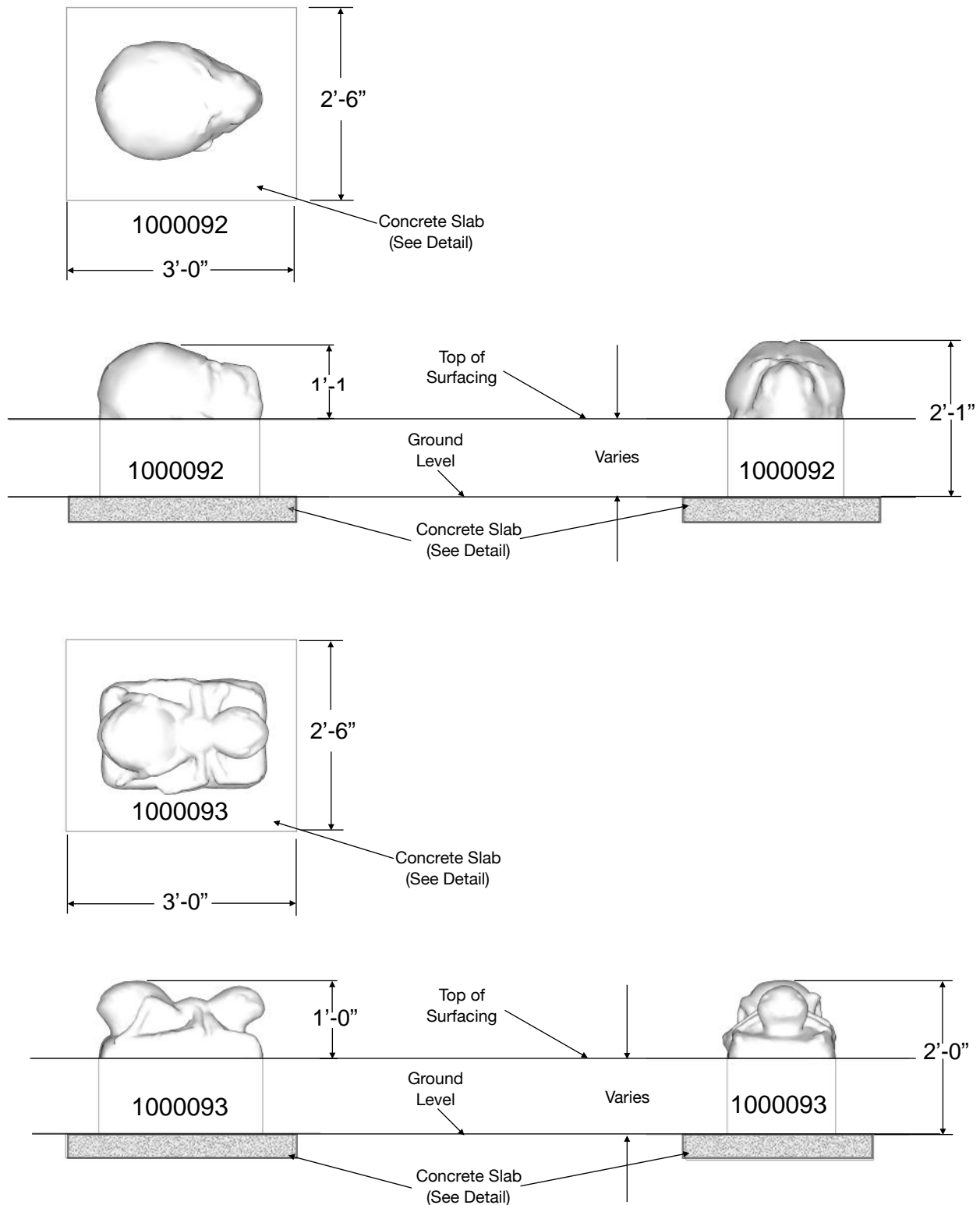
~ All dimensions are approximate ~

**User Group Age: 2-12**

Last Revised 4/25/16



## Installation Instructions

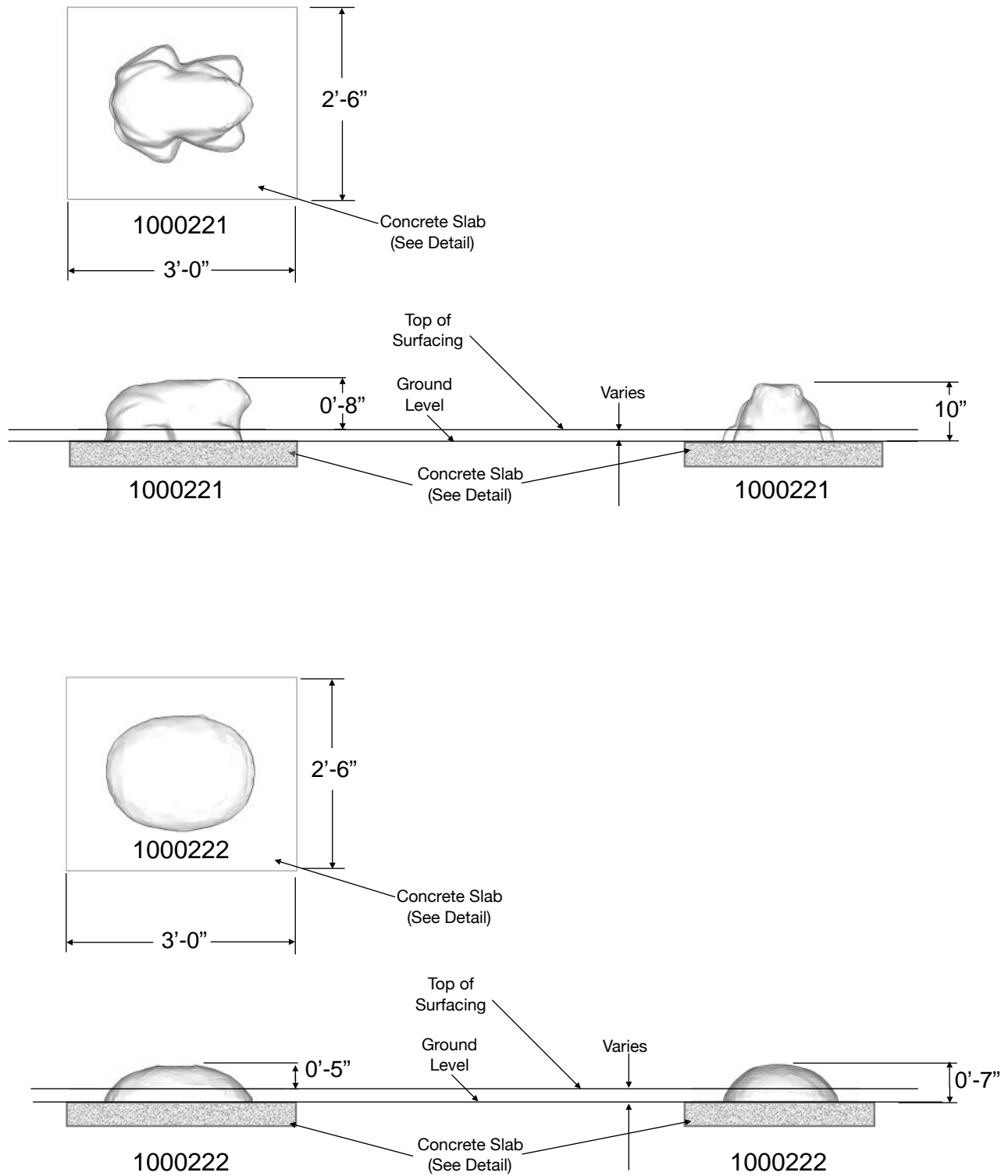


~ All dimensions are approximate ~

**User Group Age: 2-12**

Last Revised 4/25/16

## Installation Instructions



~ All dimensions are approximate ~

**User Group Age: 2-12**

Last Revised 4/25/16

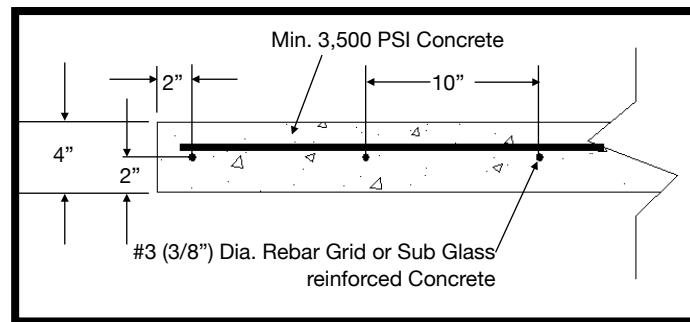
## Installation Instructions

**NOTE: Read installation instructions thoroughly before starting installation process.**

**Step 1:** Lay out the area and prepare the site for install. Concrete must be installed over a solid, level base. Check local soil condition and codes. See product installation instructions for minimum use zone requirements to ensure proper spacing and adequate surfacing area.

**Step 2:** Pour a concrete base for the stepper. Refer to the typical slab section on this page. The concrete should be flush with the ground level. Allow time for the concrete to completely cure before continuing.

**Step 3:** Using the appropriate equipment, place the stepper into final installation location. See the hardware recommendation page for information on anchoring equipment down to your slab. Refer to the surfacing manufacturer for installation of an approved impact attenuating play surface around the stepper with a minimum of 6 feet in every direction.

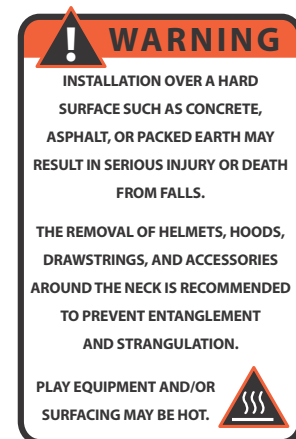


**Typical 4" Concrete Slab Section**

Check local soil conditions.  
(Not to Scale)

### NOTES PRIOR TO CONSTRUCTION:

- Use appropriate equipment to lift and move the play equipment.
- Check local codes and requirements prior to digging or installing any equipment.



## Installation Instructions

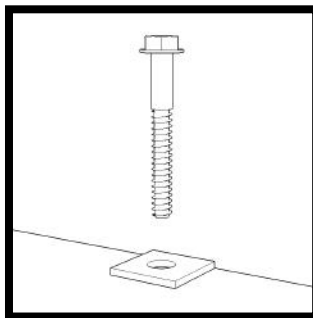
**Step 4:** Locate your anchor bolts, supplied by Cre8Play. Using the proper standard drill bit size noted in the installation table, drill the concrete to the appropriate hole depth (C).

**Step 5:** Insert the anchor bolt into the hole and tighten until the bolt is fully seated. Do NOT over tighten the anchor bolts.

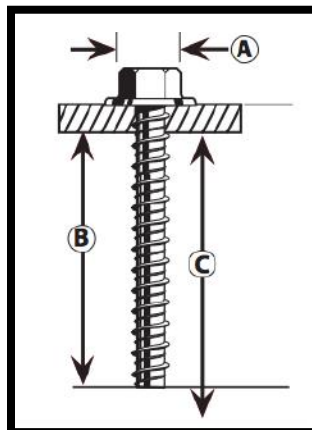
**Installation Table**

| Anchor Bolt Size | ANSI Standard Drill Bit Diameter | Anchor Head (Socket Size) Diameter<br>(A) | Minimum Embedment<br>(B) | Hole Depth<br>(C) |
|------------------|----------------------------------|---|--------------------------|-------------------|
| 1/2" x 3"        | 7/16"                            | 3/4"                                      | 2 1/2"                   | 3 1/2"            |

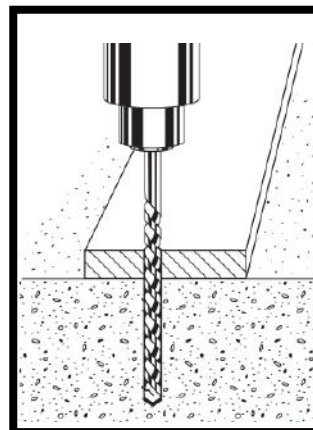
**Anchor Bolt (Large Diameter Tapcon) Installation:**



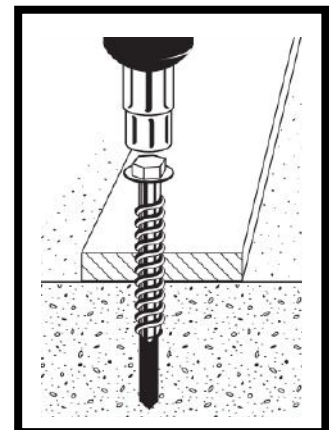
**Mounting Detail**  
(Not to Scale)



**Step 1: Drill**



**Step 2: Anchor**



**NOTE: Always wear eye protection appropriate to the task at hand.**