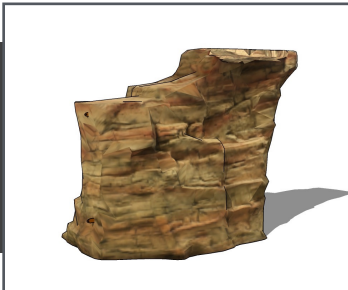


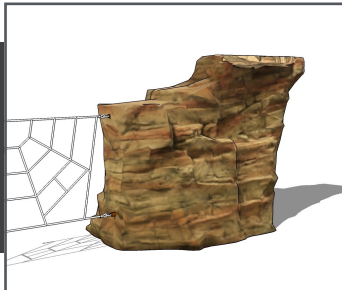


A realistic rock climber with varying degrees of climbing difficulties. Constructed of durable Glass Fiber Reinforced Concrete (GFRC). The unique design allows for 360 degrees of climbing, integrated handholds, realistic texture, fossil reliefs and a one of a kind ADA access for users of all abilities.

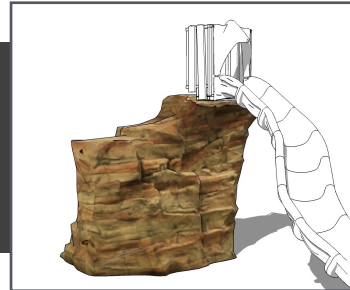


**Strato Rock Climber
1000001**

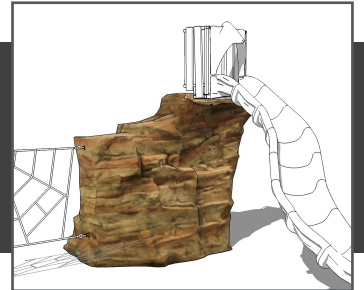
L: 10'-3" x W: 7'-4" x H: 8'-0"
5,200 LBS



**Strato Rock w/ Rope Tabs
1000010**



**Strato Rock w/ Slide
Attachment
1000011**



**Strato w/ Slide
Attachment and Tabs
1000012**

~ Dimensions and weights are approximate ~
~ Heights shown from top of surfacing ~
User Group Age: 5-12