

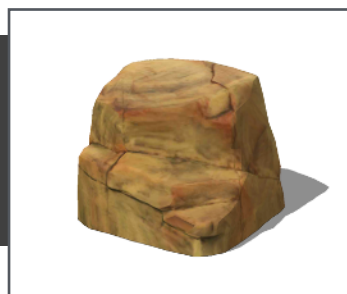


These durable Glass Fiber Reinforced Concrete (GFRC) Boulders have the look and feel of actual stone. Crafted and themed for a realistic look, it will seem as though they were pulled right from nature! Link several together in any configuration to create different play activities. Available in Medium and Large sizes.



**Medium Boulder**  
**1000042**

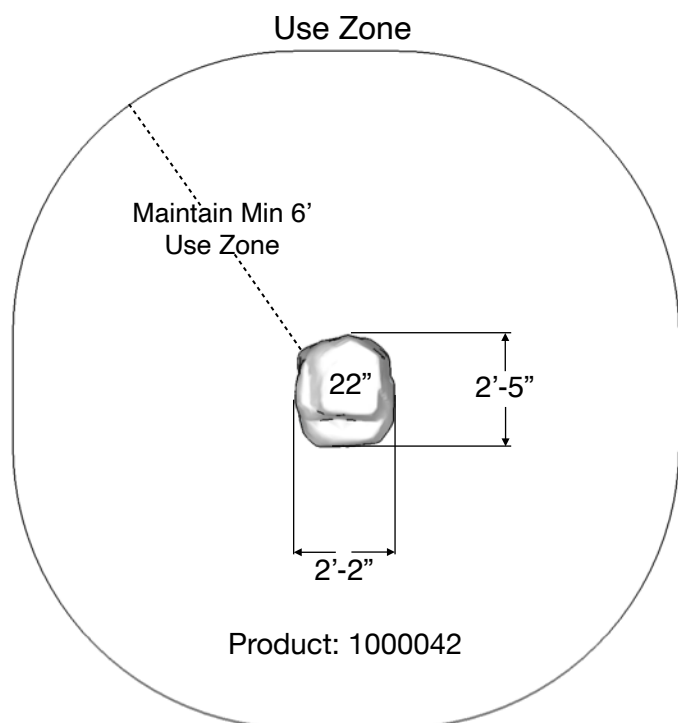
L: 2'-5" x W: 2'-2" x H: 1'-10"  
250 LBS



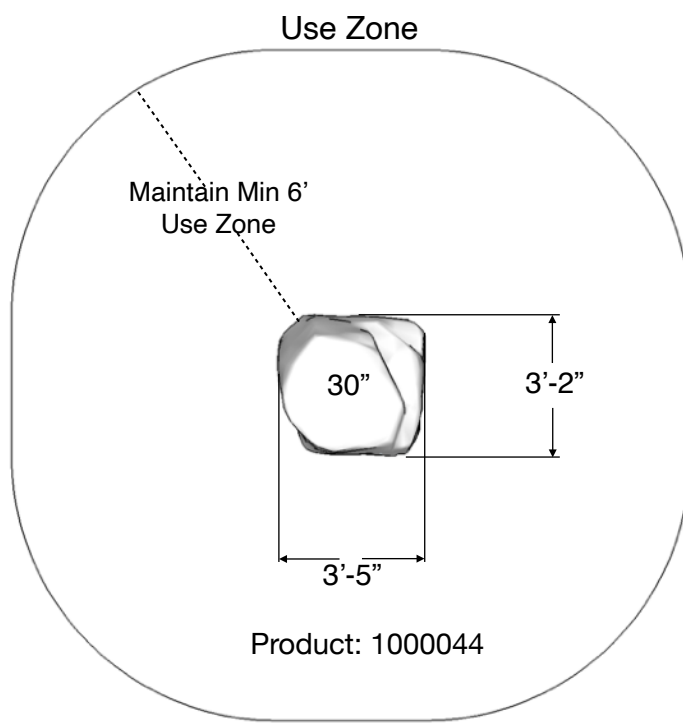
**Large Boulder**  
**1000044**

L: 3'-5" x W: 3'-2" x H: 2'-6"  
500 LBS

## Installation Instructions



Product: 1000042

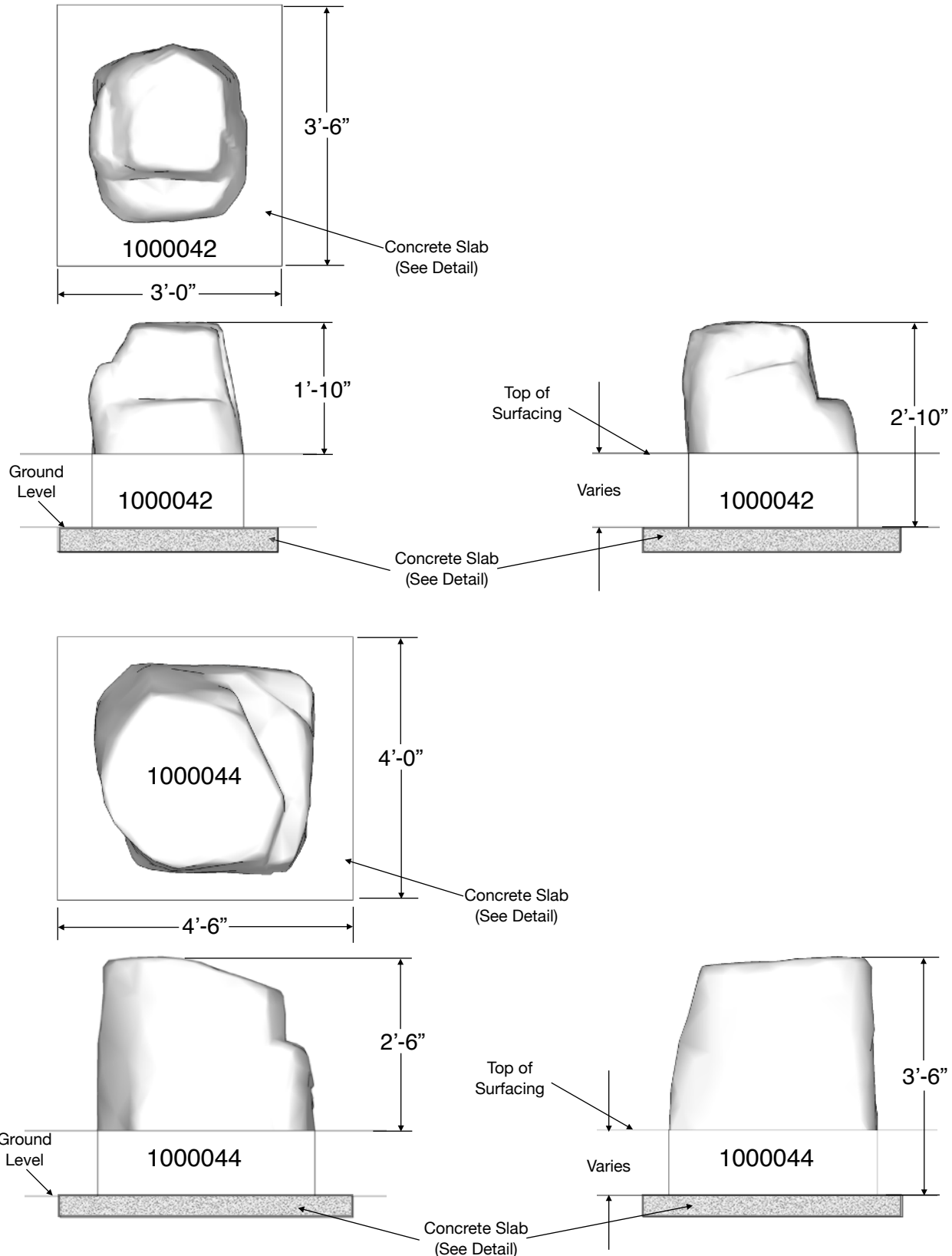


Product: 1000044

### Included Items:

Item	Description	Quantity
Boulder	Play Equipment	1
Anchor Bolt 1/2" x 3"	Mounting Hardware	2

## Installation Instructions



~ All dimensions are approximate ~

**Use Group Age: 2-12**

Last Revised 11/30/2021

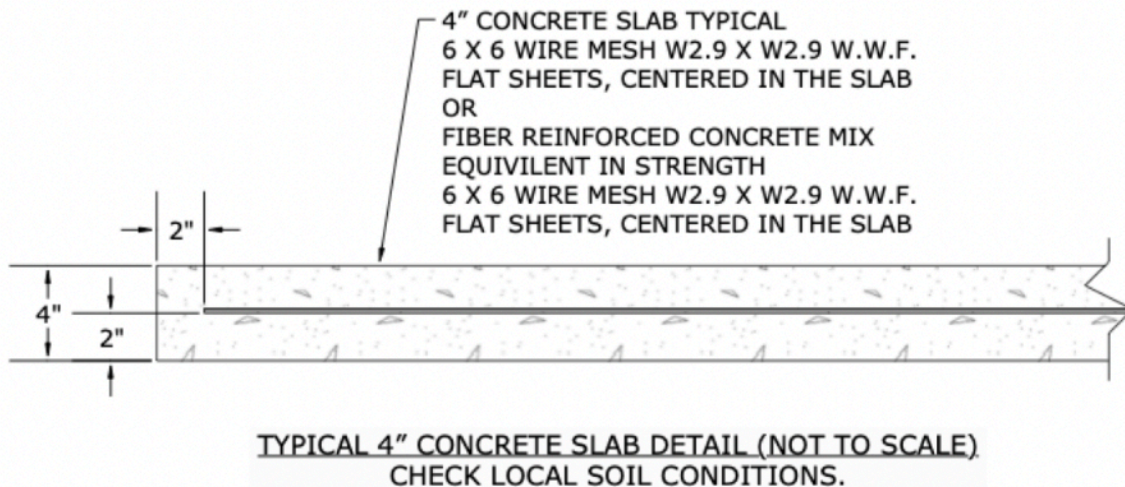
## Installation Instructions

**NOTE:** Read installation instructions thoroughly before starting installation process.

**Step 1:** Lay out the area and prepare the site for install. Concrete must be installed over a solid, level base. Check local soil condition and codes. See installation instructions for minimum use zone requirements to ensure proper spacing and adequate surfacing area.

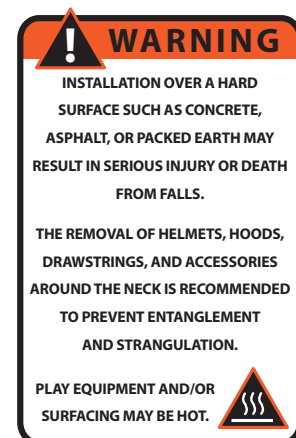
**Step 2:** Pour a concrete base for the boulder. Refer to the typical slab section on this page. The concrete should be flush with the ground level. Allow time for the concrete to completely cure before continuing.

**Step 3:** Using an appropriate lull-type forklift or boom, place boulder into final installation location. See the hardware recommendation page for information on anchoring equipment down to your slab. Refer to the surfacing manufacturer for installation of an approved impact attenuating play surface around the boulder with a minimum of 6 feet in every direction.



### NOTES PRIOR TO CONSTRUCTION:

- Use appropriate equipment to lift and move the play equipment.
- Check local codes and requirements prior to digging or installing any equipment.



## Installation Instructions

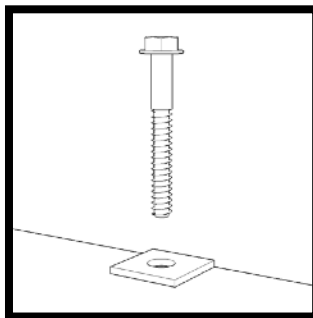
**Step 4:** Locate your anchor bolts, supplied by Cre8Play. Using the proper standard drill bit size noted in the installation table, drill the concrete to the appropriate hole depth (C).

**Step 5:** Insert the anchor bolt into the hole and tighten until the bolt is fully seated. Do NOT over tighten the anchor bolts.

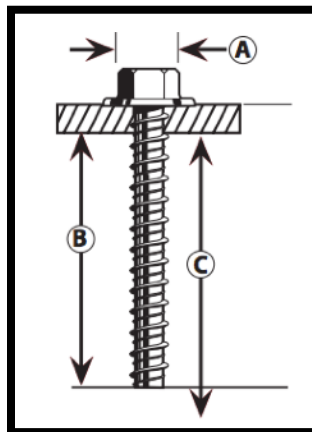
**Installation Table**

Anchor Bolt Size	ANSI Standard Drill Bit Diameter	Anchor Head (Socket Size) Diameter (A)	Minimum Embedment (B)	Hole Depth (C)
1/2" x 3"	7/16"	3/4"	2 1/2"	3 1/2"

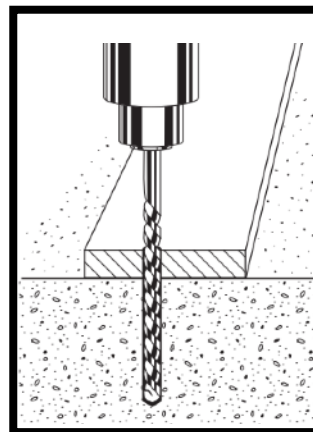
**Anchor Bolt (Large Diameter Tapcon) Installation:**



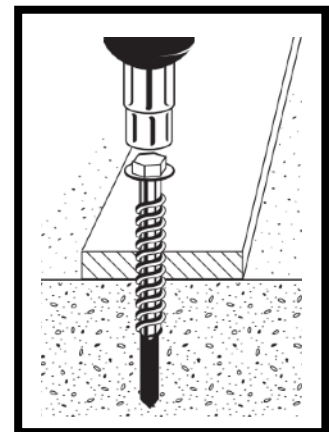
**Mounting Detail**  
(Not to Scale)



**Step 1: Drill**



**Step 2: Anchor**



**NOTE: Always wear eye protection appropriate to the task at hand.**