



The Tree Trunk Planter was designed to fit into natural surroundings as well as streetscapes, apartment and hotel fronts, entry-ways, municipalities, city spaces or wherever a little nature is needed. The high detail in design of this planter paired with a rugged and sturdy design makes it the perfect addition to any indoor and outdoor application. Manufactured from Glass Fiber Reinforced Concrete (GFRC) for extreme durability.



**Tree Trunk Planter  
5000050**

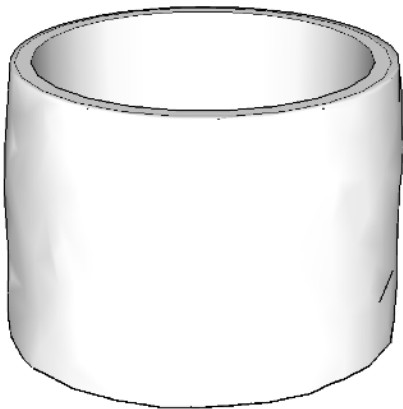
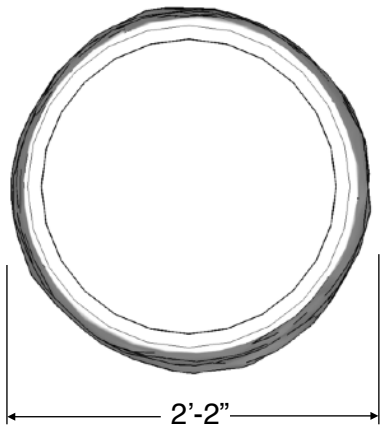
L: 2'-2" x W: 2'-2" x H: 1'-6"

150 LBS

Capacity: 29 Gallons

*~ Dimensions and weights are approximate ~*

Installation Instructions



Included Items:

Item	Description	Quantity
Tree Trunk Planter	Site Amenity	1
Anchor Bolt 1/2" x 3"	Mounting Hardware	2

~ All dimensions are approximate ~

Last Revised 12/1/2021

## Installation Instructions

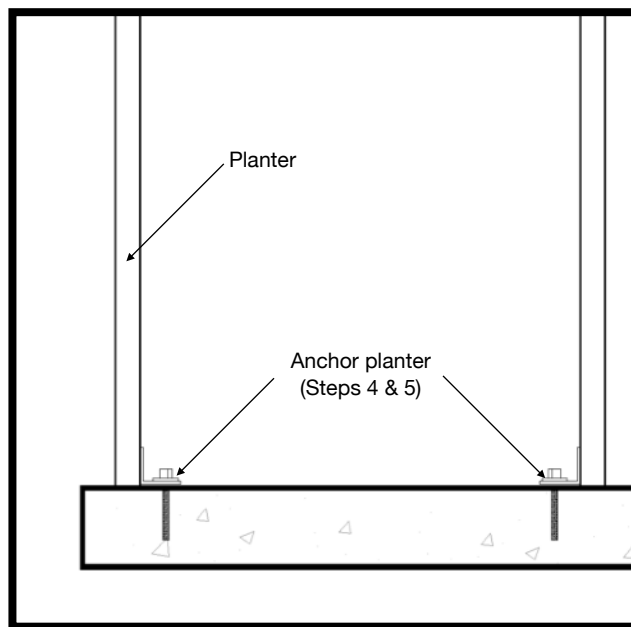
**NOTE:** Read installation instructions thoroughly before starting installation process.

**Step 1:** Lay out the area and prepare the site for install. Concrete must be installed over a solid, level base. Check local soil condition and codes.

**Step 2:** Pour a concrete base for the planter if not installing on an existing concrete, asphalt, or earthen base.

**Step 3:** Place the planter in its final installation place. See the hardware recommendation page for information on anchoring equipment down to your slab, then bolt down the receptacle using the tabs inside the base.

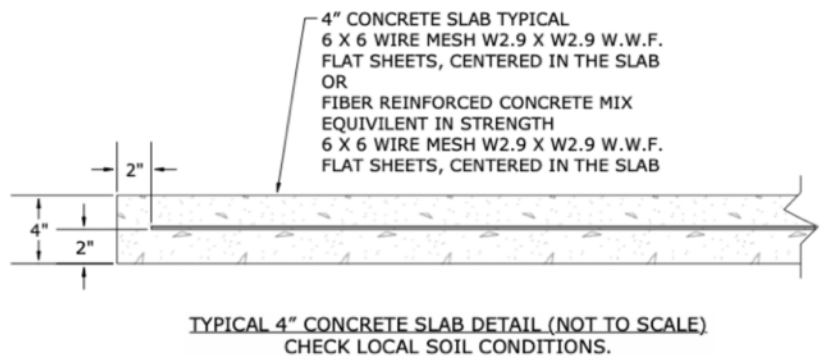
**Step 4:** Ensure the Planter will drain and fill with your choice of soil and vegetation.



Planter Anchoring

### NOTES PRIOR TO CONSTRUCTION:

- Use appropriate equipment to lift and move the site amenity.
- Check local codes and requirements prior to digging or installing any equipment.



~ All dimensions are approximate ~



## Installation Instructions

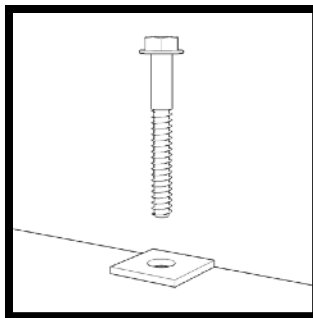
**Step 4:** Locate your anchor bolts, supplied by Cre8Play. Using the proper standard drill bit size noted in the installation table, drill the concrete to the appropriate hole depth (C).

**Step 5:** Insert the anchor bolt into the hole and tighten until the bolt is fully seated. Do NOT over tighten the anchor bolts.

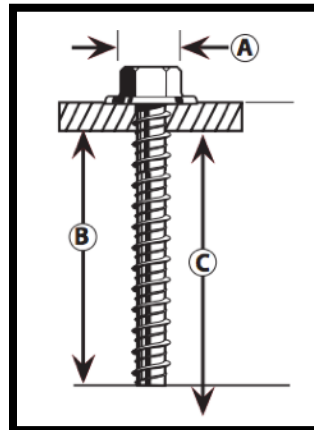
**Installation Table**

Anchor Bolt Size	ANSI Standard Drill Bit Diameter	Anchor Head (Socket Size) Diameter (A)	Minimum Embedment (B)	Hole Depth (C)
1/2" x 3"	7/16"	3/4"	2 1/2"	3 1/2"

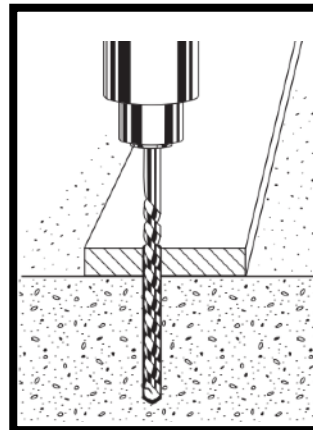
**Anchor Bolt (Large Diameter Tapcon) Installation:**



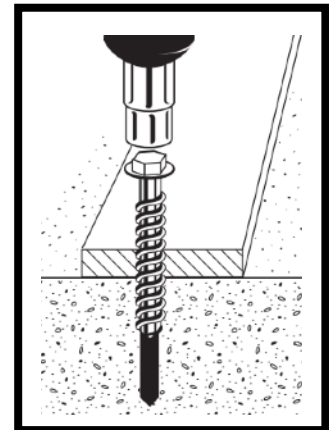
**Mounting Detail**  
(Not to Scale)



**Step 1: Drill**



**Step 2: Anchor**



**NOTE: Always wear eye protection appropriate to the task at hand.**

~ All dimensions are approximate ~