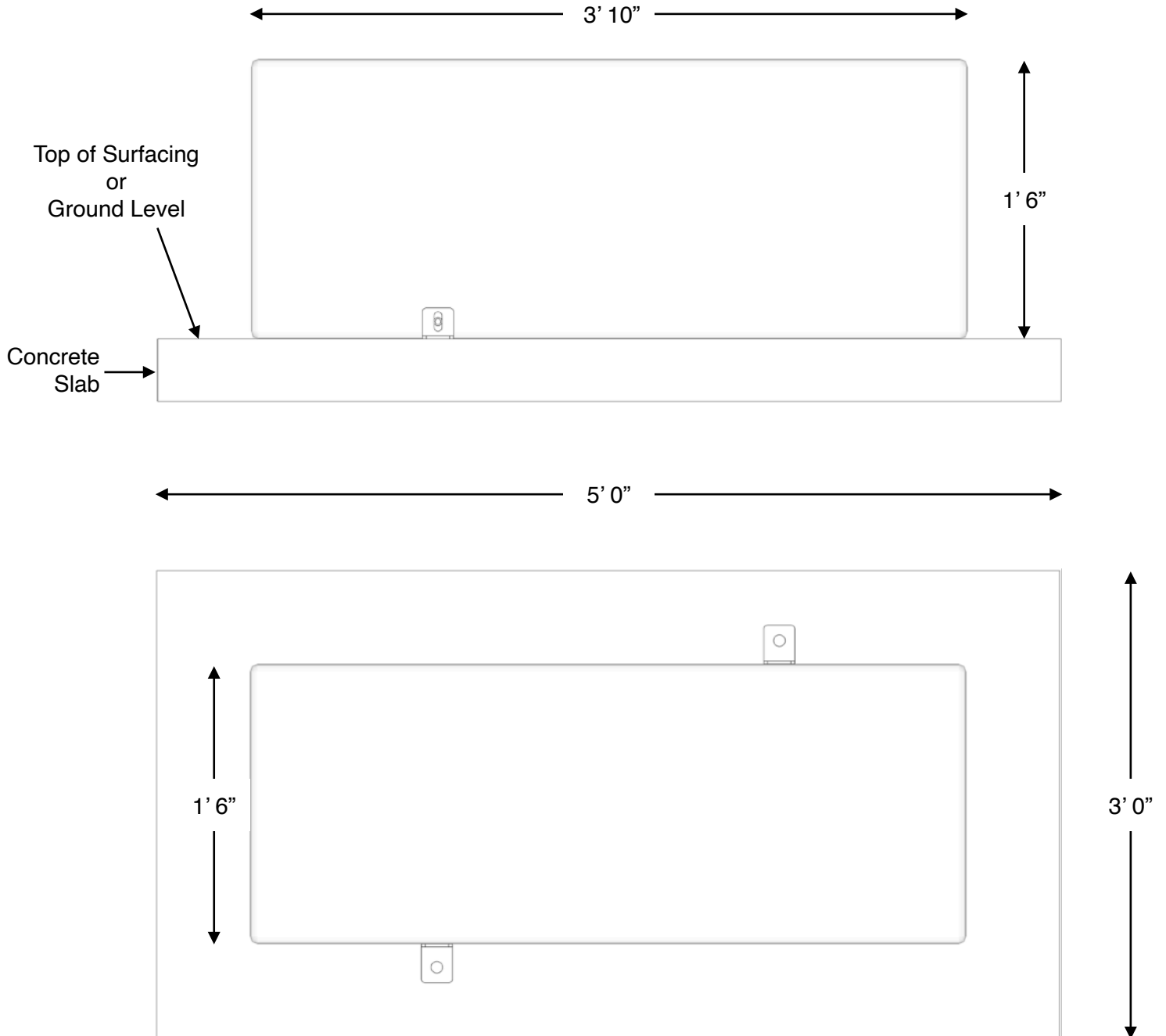




Cre8Play's artists recreate the texture, feel and colors of real hay for a comfortable sitting bench. Constructed of durable Glass Fiber Reinforced Concrete, (GFRC), our unique design and realistic appearance will accent any site environment.



L: 3' 10"
W: 1' 6"
H: 1' 6"
420 LBS



NOTES PRIOR TO CONSTRUCTION:

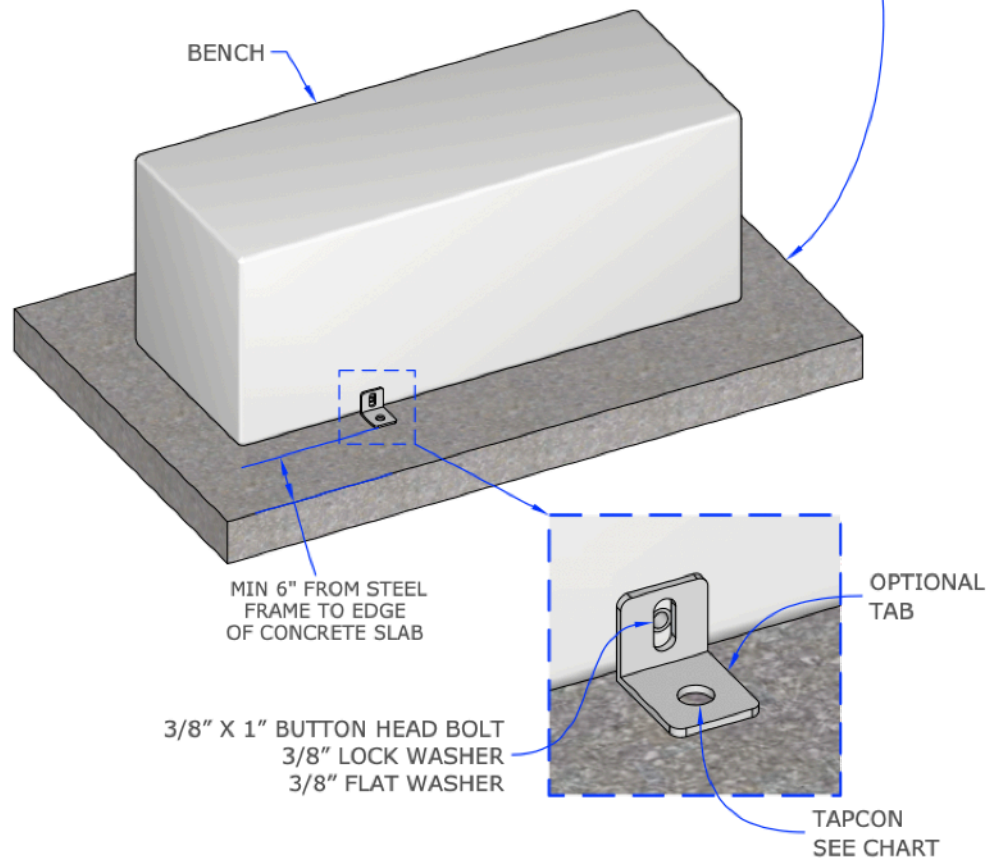
- Use appropriate equipment to lift and move the play equipment.
- Check local codes and requirements prior to digging or installing any equipment.

4" CONCRETE SLAB TYPICAL
6 X 6 WIRE MESH W2.9 X W2.9 W.W.F.
FLAT SHEETS, CENTERED IN THE SLAB
OR
FIBER REINFORCED CONCRETE MIX
EQUIVALENT IN STRENGTH
6 X 6 WIRE MESH W2.9 X W2.9 W.W.F.
FLAT SHEETS, CENTERED IN THE SLAB

TYPICAL 4" CONCRETE SLAB DETAIL (NOT TO SCALE)
CHECK LOCAL SOIL CONDITIONS.

4" THK CONCRETE SLAB
MIN 3,500 PSI CONCRETE WITH

3/8" REBAR GRID (10" OC)
OR
SUB GLASS FIBER
REINFORCED CONCRETE MIX



NOTE: Read installation instructions thoroughly before starting installation process.

Step 1: Lay out the area and prepare the site for install. Concrete must be installed over a solid, level base. Check local soil condition and codes. See product installation instructions for minimum use zone requirements to ensure proper spacing and adequate surfacing area.

Step 2: Pour a concrete base for the component. Refer to the typical concrete slab section in this document. The concrete should be flush with the ground level. Allow time for the concrete to completely cure before continuing.

Step 3: Using an appropriate forklift or boom, place component into final installation location. See the hardware recommendation for information on anchoring equipment down to your concrete slab. Refer to the surfacing manufacturer for installation of an approved impact attenuating play surface around the component with a minimum use zone in every direction.

Optional:

Step 4: Locate your tabs, hardware and anchor bolts, supplied. Attach the tabs to the component using the supplied hardware per page 3 of these instructions. Using the proper standard drill bit size noted in the installation table, drill the concrete to the appropriate hole depth through the mounting holes.

Step 5: Insert the anchor bolt into the hole and tighten until the bolt is fully seated. Do NOT over tighten the anchor bolts.

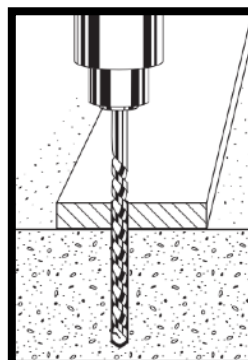
Included Items:

Item	Description	Quantity
Hay Bale Bench	Site Amenity	1
Anchor Bolt 1/2" x 3"	Optional Hardware	2
Mounting Tabs	Optional Hardware	2
3/8" x 1" BHB Bolt, Washer & Lock Washer	Optional Hardware	2

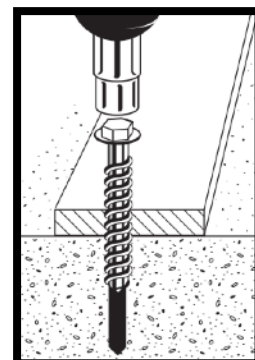
Anchor Bolt Installation:

Anchor Bolt Size	ANSI Standard Drill Bit Diameter	Anchor Head (Socket Size)	Minimum Embedment	Hole Depth
1/2" x 3"	7/16"	3/4"	2 1/2"	3 1/2"
5/8" x 4"	1/2"	13/16"	3 1/2"	4 1/2"
5/8" x 6"	1/2"	13/16"	5 1/2"	6 1/2"

Step 1: Drill



Step 2: Anchor



NOTE: Always wear eye protection appropriate to the task at hand.