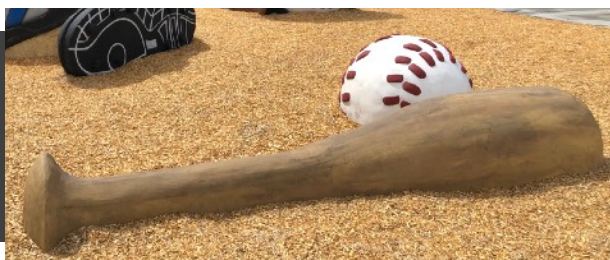




Constructed of durable Glass Fiber Reinforced Concrete (GFRC). The unique design allows for various degrees of climbing and realistic texture.



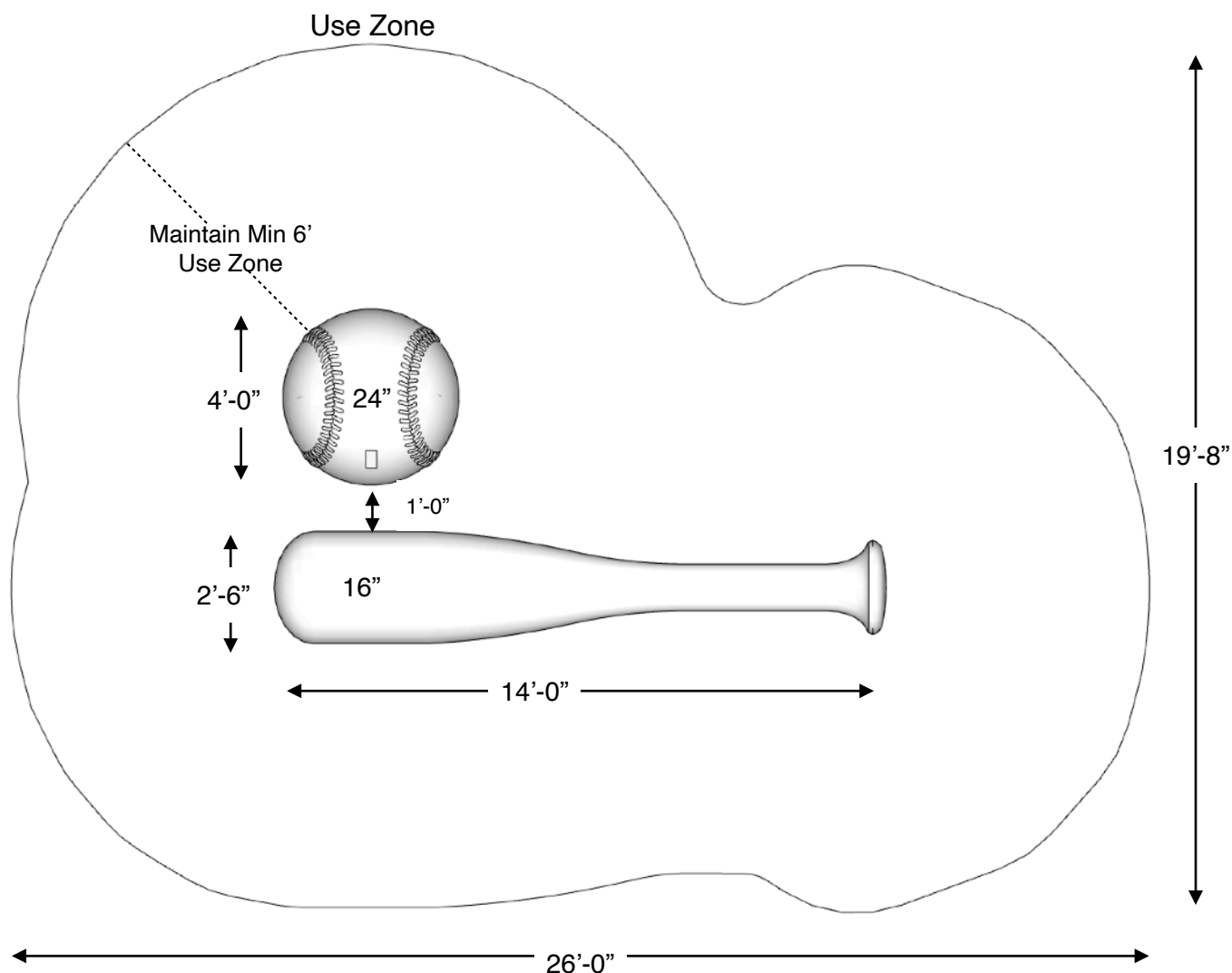
**Baseball Climber
1000022**

L: 4'-0" x W: 4'-0" x H: 2'-0"
650 LBS

**Giant Baseball Bat
1000257**

L: 14'-0" x W: 2'-6" x H: 1'-4"
1500 LBS

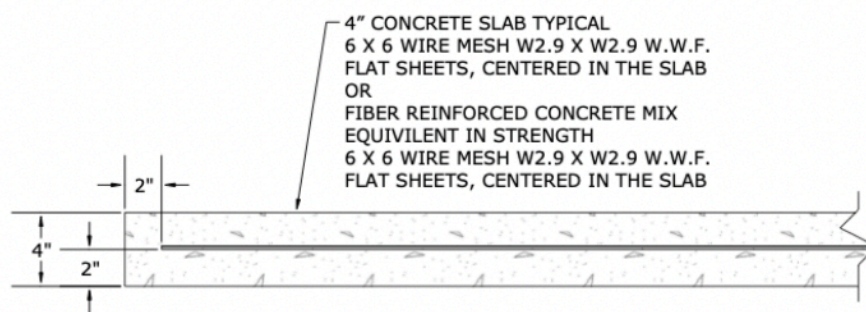
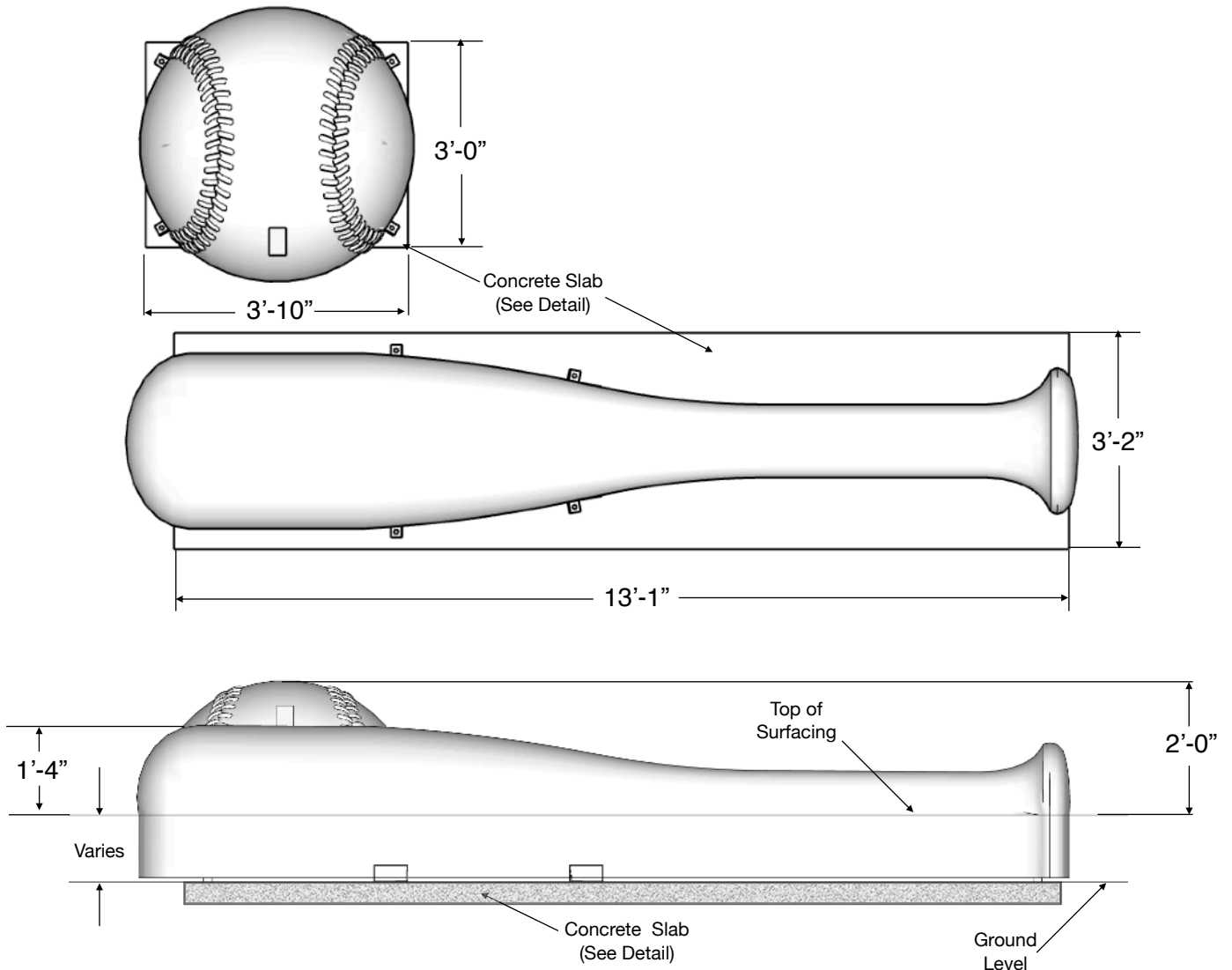
~ Dimensions and weights are approximate ~
~ Heights shown from top of surfacing ~
User Group Age: 5-12



Product: 1000022, 1000257

Included Items:

Item	Description	Quantity
Giant Baseball Bat	Play Equipment	1
Baseball Climber	Play Equipment	1
Anchor Bolt 1/2" x 3"	Mounting Hardware	8



TYPICAL 4" CONCRETE SLAB DETAIL (NOT TO SCALE)
CHECK LOCAL SOIL CONDITIONS.

~ All dimensions are approximate ~

User Group Age: 5-12

Last Revised 11/30/2021

NOTE: Read installation instructions thoroughly before starting installation process.

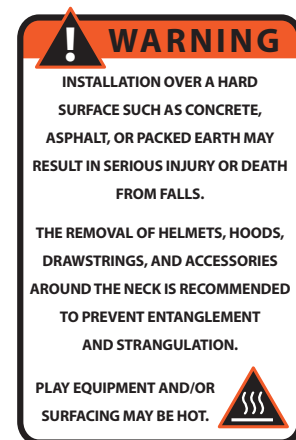
Step 1: Lay out the area and prepare the site for install. Concrete must be installed over a solid, level base. Check local soil condition and codes. See product specification sheet for minimum use zone requirements to ensure proper spacing and adequate surfacing area.

Step 2: Pour concrete slab for the Giant Baseball Bat and Baseball Climber. Refer to the typical slab section in these installation instructions. The concrete should be flush with the sub-grade surface. Allow time for the concrete to completely cure before continuing.

Step 3: Using an appropriate lull-type forklift or boom, place play equipment into final installation location. See the hardware recommendation page for information on anchoring equipment down to your slab. Refer to the surfacing manufacturer for installation of an approved impact attenuating play surface around the Giant Baseball Bat and Baseball Climber with a minimum of 6 feet in every direction.

NOTES PRIOR TO CONSTRUCTION:

- Use appropriate equipment to lift and move the play equipment.
- Check local codes and requirements prior to digging or installing any equipment.



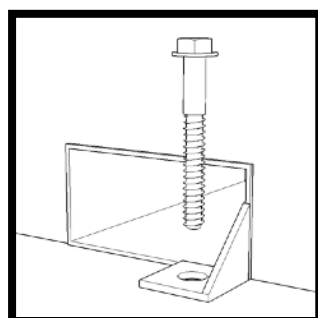
Step 1: Locate your anchor bolts, supplied by Cre8Play. Using the proper standard drill bit size noted in the installation table, drill the concrete to the appropriate hole depth (C).

Step 2: Insert the anchor bolt into the hole and tighten until the bolt is fully seated. Do NOT over tighten the anchor bolts.

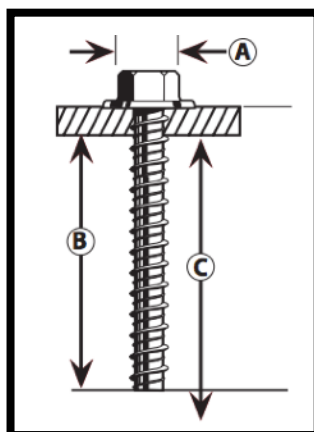
Installation Table

Anchor Bolt Size	ANSI Standard Drill Bit Diameter	Anchor Head (Socket Size) Diameter (A)	Minimum Embedment (B)	Hole Depth (C)
1/2" x 3"	7/16"	3/4"	2 1/2"	3 1/2"

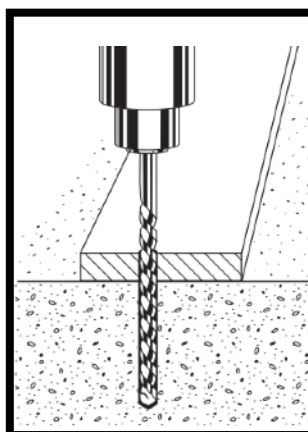
**Anchor Bolt (Large Diameter Tapcon)
Installation:**



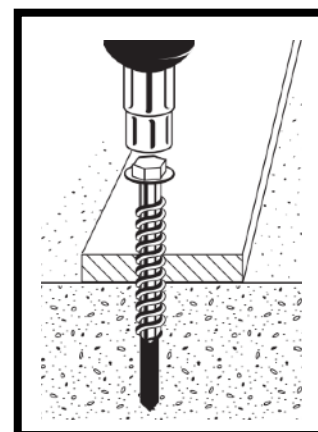
Mounting Detail
(Not to Scale)



Step 1: Drill



Step 2: Anchor



NOTE: Always wear eye protection appropriate to the task at hand.