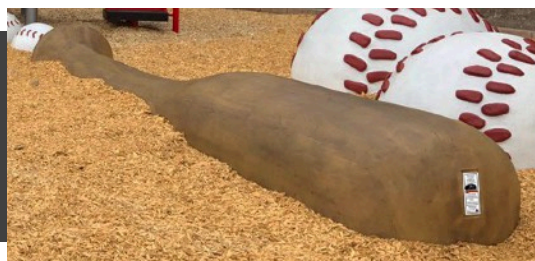




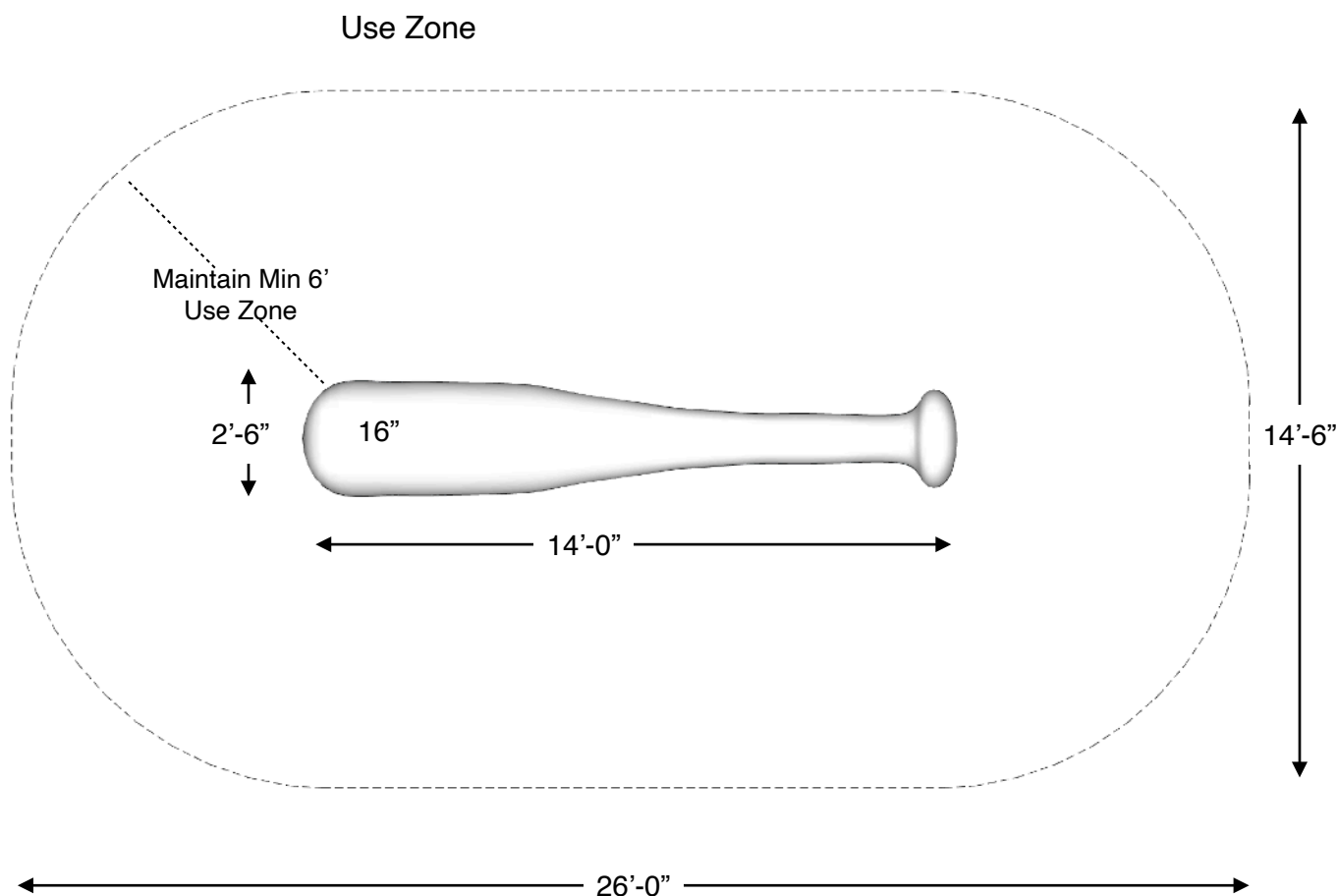
Constructed of durable Glass Fiber Reinforced Concrete (GFRC). The unique design allows for various degrees of climbing and realistic texture.



**Giant Baseball Bat**

L: 14'-0" x W: 2'-6" x H: 1'-4"  
1500 LBS

~ Dimensions and weights are approximate ~  
~ Heights shown from top of surfacing ~  
**User Group Age: 5-12**

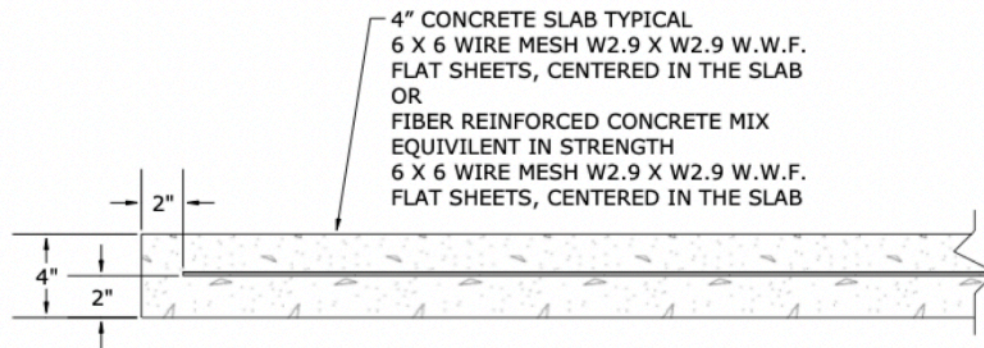
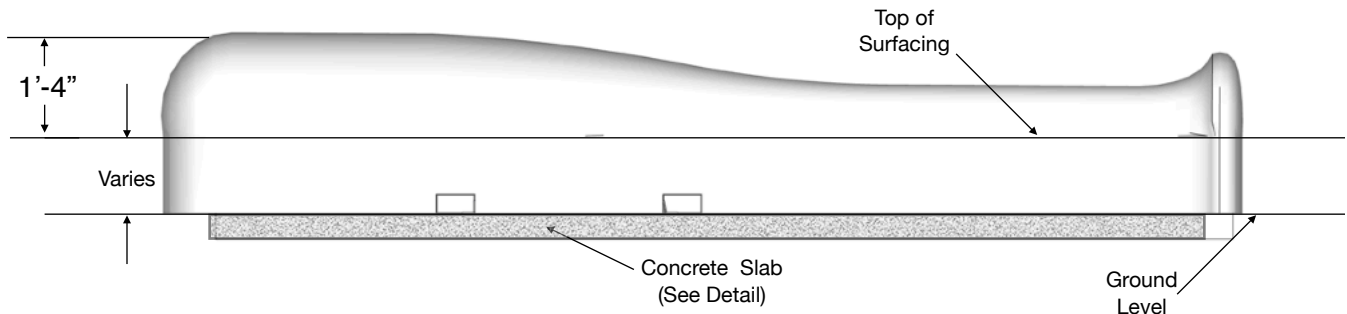
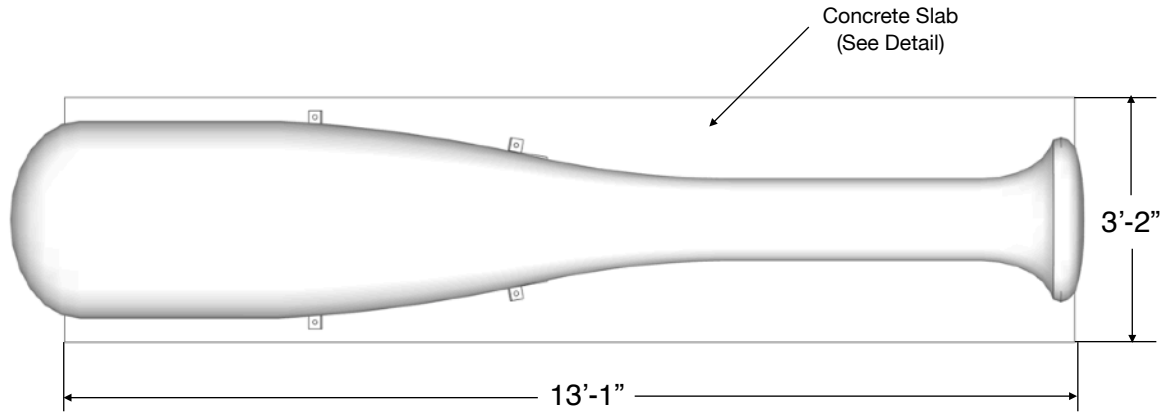


Product: 1000257

**Included Items:**

Item	Description	Quantity
Giant Baseball Bat	Play Equipment	1
Anchor Bolt 1/2" x 3"	Mounting Hardware	4





**TYPICAL 4" CONCRETE SLAB DETAIL (NOT TO SCALE)**  
CHECK LOCAL SOIL CONDITIONS.

~ All dimensions are approximate ~

**User Group Age: 5-12**

Last Revised 11/30/2021

5121 Winnetka Ave N • Suite 108

New Hope, MN 55428

612.670.8195

info@cre8play.com

cre8play.com

**NOTE: Read installation instructions thoroughly before starting installation process.**

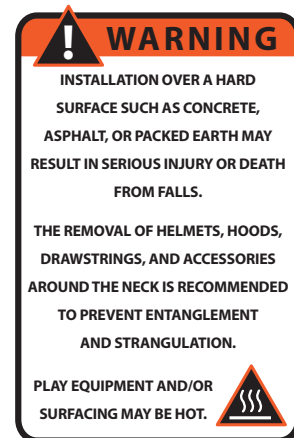
**Step 1:** Lay out the area and prepare the site for install. Concrete must be installed over a solid, level base. Check local soil condition and codes. See product specification sheet for minimum use zone requirements to ensure proper spacing and adequate surfacing area.

**Step 2:** Pour concrete slab for the Giant Baseball Bat. Refer to the typical slab section in these installation instructions. The concrete should be flush with the sub-grade surface. Allow time for the concrete to completely cure before continuing.

**Step 3:** Using an appropriate lull-type forklift or boom, place play equipment into final installation location. See the hardware recommendation page for information on anchoring equipment down to your slab. Refer to the surfacing manufacturer for installation of an approved impact attenuating play surface around the Giant Baseball Bat with a minimum of 6 feet in every direction.

#### NOTES PRIOR TO CONSTRUCTION:

- Use appropriate equipment to lift and move the play equipment.
- Check local codes and requirements prior to digging or installing any equipment.

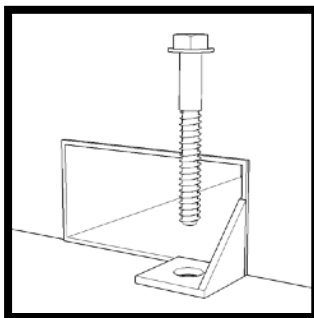


**Step 1:** Locate your anchor bolts, supplied by Cre8Play. Using the proper standard drill bit size noted in the installation table, drill the concrete to the appropriate hole depth (C).

**Step 2:** Insert the anchor bolt into the hole and tighten until the bolt is fully seated. Do NOT over tighten the anchor bolts.

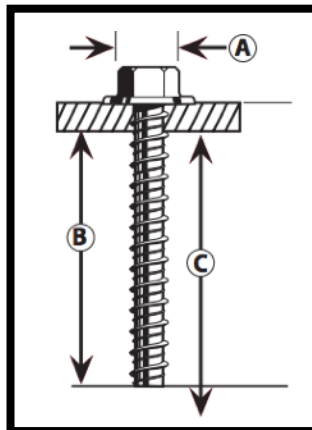
Installation Table

Anchor Bolt Size	ANSI Standard Drill Bit Diameter	Anchor Head (Socket Size) Diameter Ⓐ	Minimum Embedment Ⓑ	Hole Depth Ⓒ
1/2" x 3"	7/16"	3/4"	2 1/2"	3 1/2"

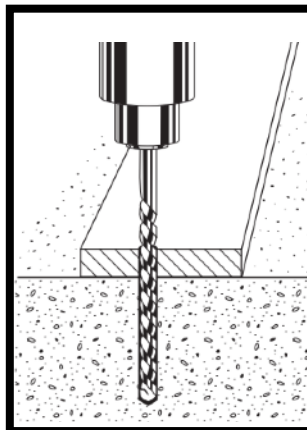


Mounting Detail  
(Not to Scale)

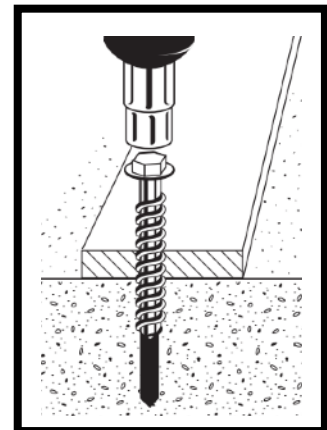
Anchor Bolt (Large Diameter Tapcon)  
Installation:



Step 1: Drill



Step 2: Anchor



**NOTE:** Always wear eye protection appropriate to the task at hand.