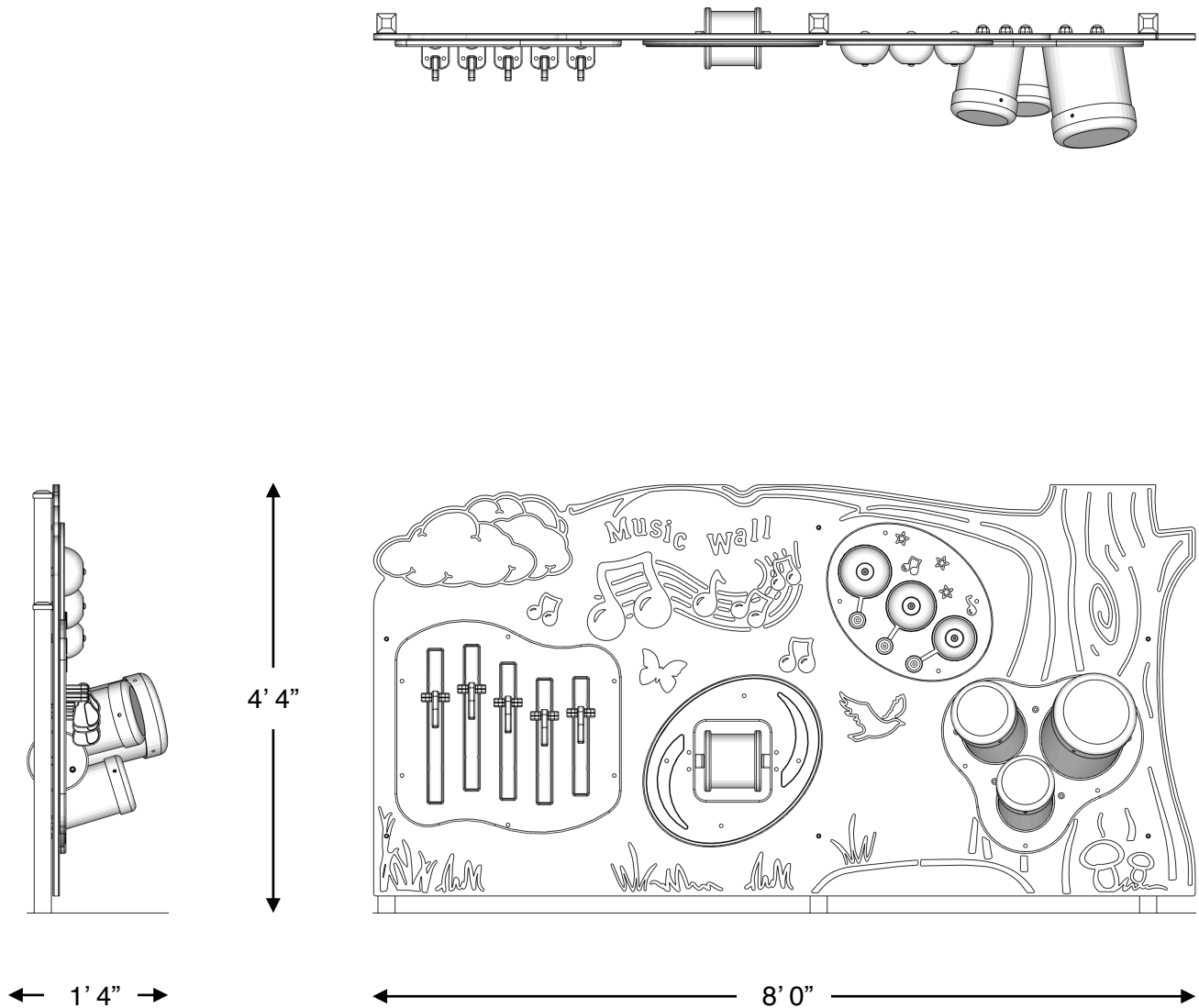




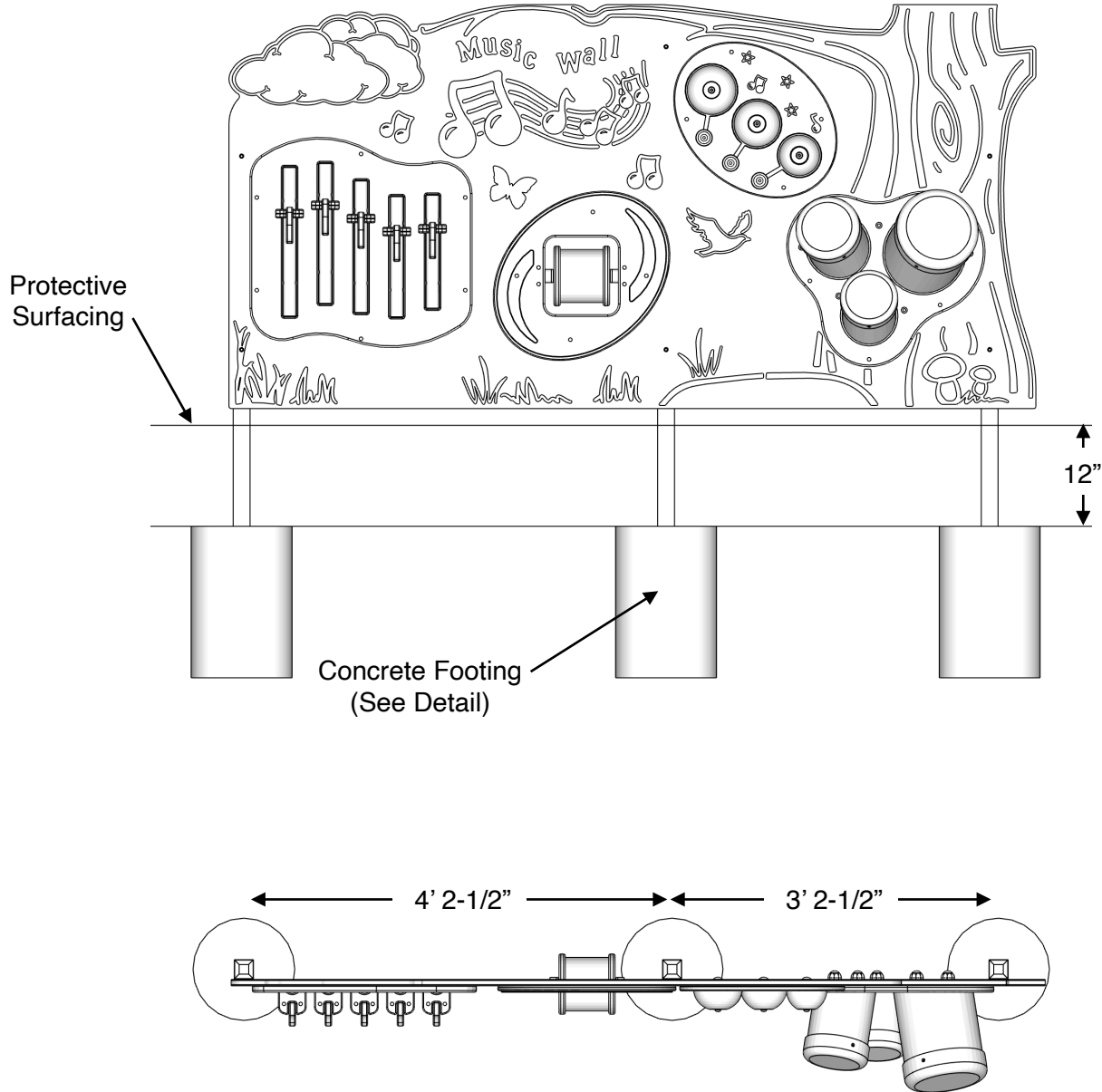
A fun themed, two sided Music Wall that includes bells, chimes and percussion. The Music Wall is constructed of durable HDPE and powder coated steel. The unique design features twelve different instruments for musicians and composers to play their songs.



L: 8' 0"
W: 1' 4"
H: 4' 4"
380 LBS

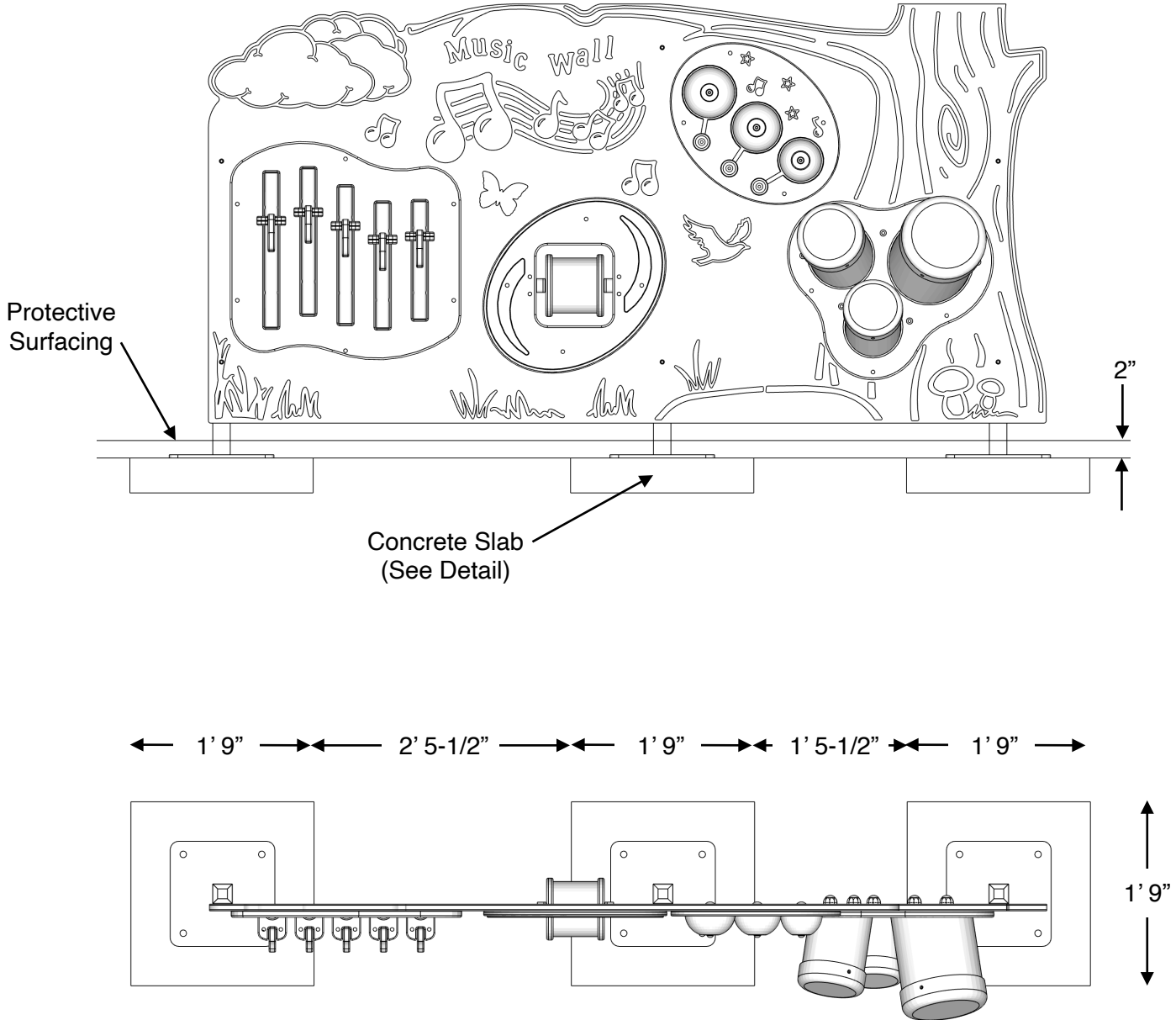


1000333 (Inground for 12" surfacing)



If you determine that less than 12" of surfacing is required, make sure the top of the concrete is 12" below the top of the protective surfacing.

1000333S (Surface Mount for 2" surfacing)



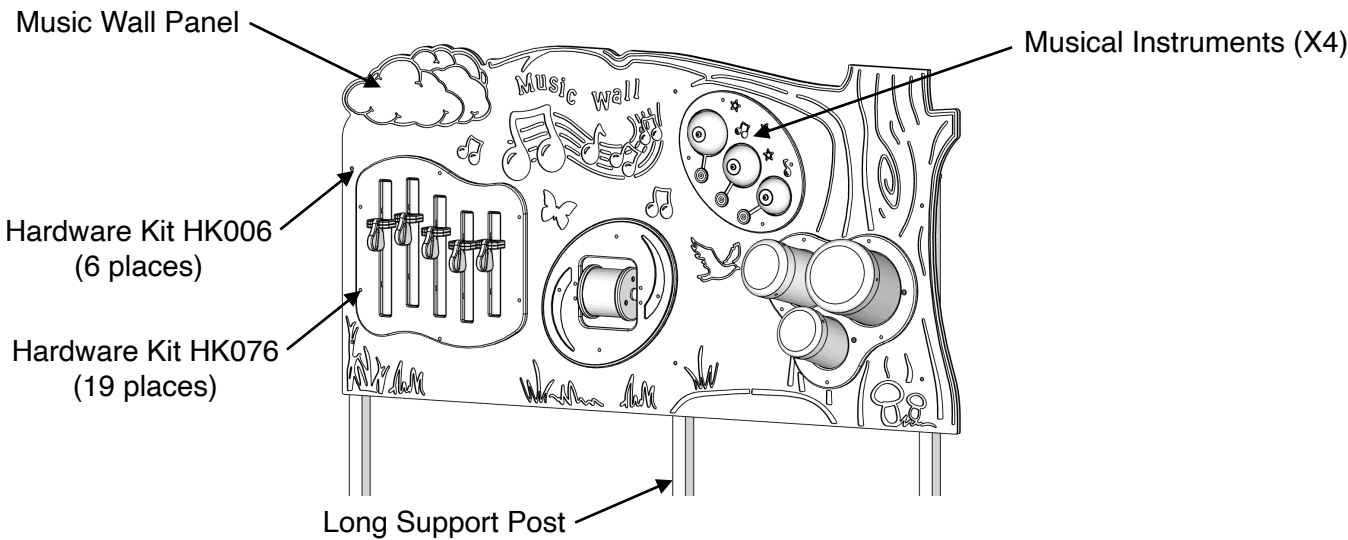
Music Panel Assembly Instructions - 1000333 Inground

Step 1: Locate Music Wall Panel. Attach the support posts to the panel using hardware kit HK006 (6 places). The long support post goes in the middle.

Step 2: Attach musical instruments to the panel using hardware kit HK076 (19 places). Note, the barrel nut goes on the back side of the panel.

Included Items:

Item	Description	Quantity
Music Wall Panel	Play Equipment	1
Musical Instruments	Play Equipment	4
Support Posts	Play Equipment	3
HK024	3/8" x 1-1/2" Button Head Bolt, Torx, Pin-in, SS	6
HK024	3/8" x 7/8" OD Flat Washer, SS	6
HK024	3/8" Split Lock Washer, SS	6
HK094	3/8" x 1-1/2" Button Head Bolt, Torx, Pin-in, SS	19
HK094	3/8" x 7/8" OD Flat Washer, SS	19
HK094	3/8" Split Lock Washer, SS	19
HK094	3/8" x 7/16" Barrel Nut, SS	19



Music Panel Assembly Instructions - 1000333 Inground

NOTE: Read installation instructions thoroughly before starting installation process.

Step 3: Lay out the area and prepare the site for install. Concrete must be installed over a solid, level base. Check local soil condition and codes. See product installation instructions for minimum use zone requirements to ensure proper spacing and adequate surfacing area.

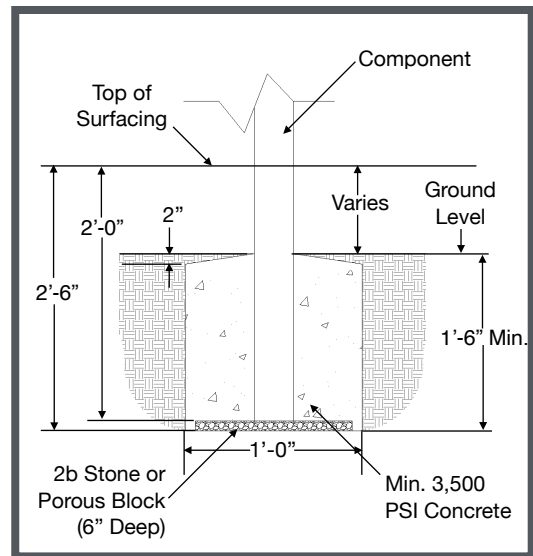
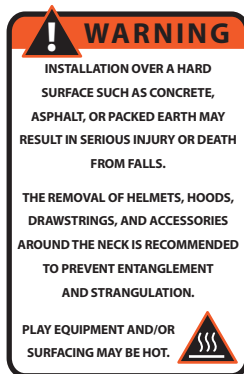
Step 4: Refer to the typical in-ground footing detail on excavating a hole for the Component.

Step 5: Place the component into the excavated footing, temporarily bracing when level and plumb. Pour a concrete footing. The concrete should be flush with the ground level, as shown in the typical in-ground footing detail. Allow time for the concrete to cure completely before continuing.

Step 6: Remove temporary bracing.

NOTES PRIOR TO CONSTRUCTION:

- Use appropriate equipment to lift and move the play equipment.
- Check local codes and requirements prior to digging or installing any equipment.



Typical Component Footing Detail
Check local soil conditions.
(Not to Scale)

NOTE: Always wear eye protection appropriate to the task at hand.

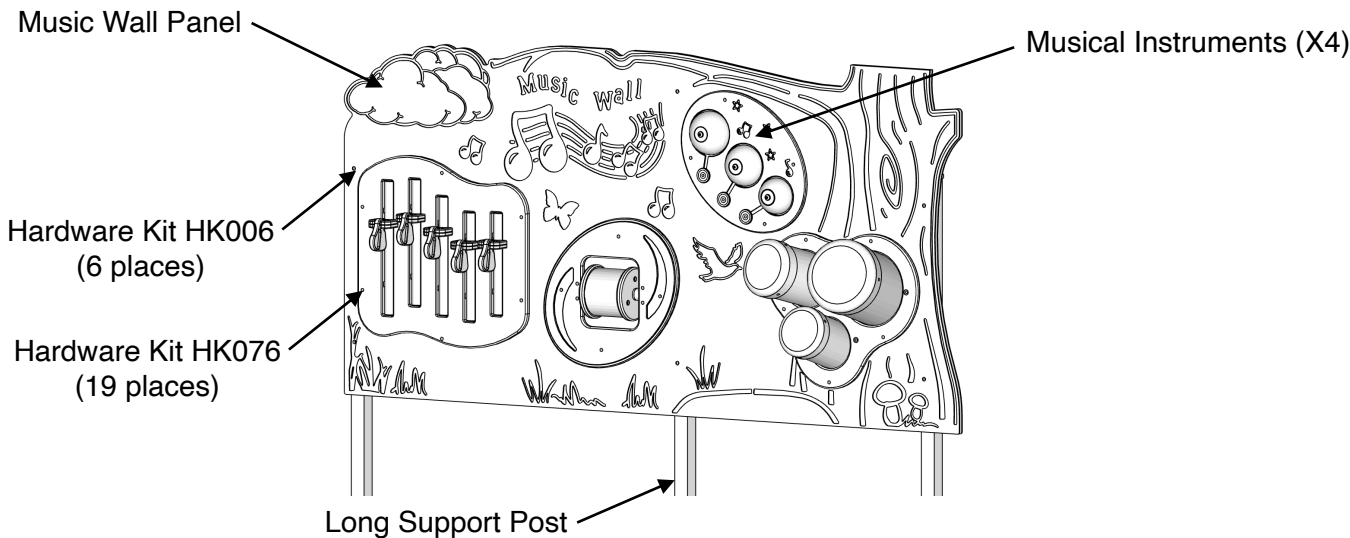
Music Panel Assembly Instructions - 1000333S, Surface Mount Model

Step 1: Locate Music Wall Panel. Attach the support posts to the panel using hardware kit HK006 (6 places). The long support post goes in the middle.

Step 2: Attach musical instruments to the panel using hardware kit HK076 (19 places). Note, the barrel nut goes on the back side of the panel.

Included Items:

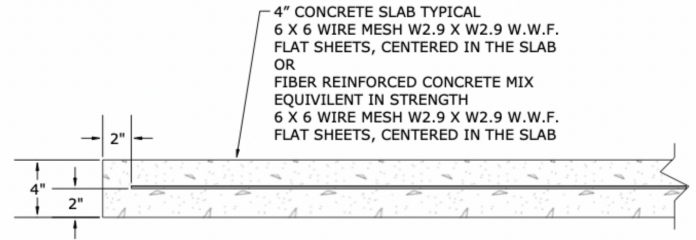
Item	Description	Quantity
Music Wall Panel	Play Equipment	1
Musical Instruments	Play Equipment	4
Support Posts	Play Equipment	3
HK024	3/8" x 1-1/2" Button Head Bolt, Torx, Pin-in, SS	6
HK024	3/8" x 7/8" OD Flat Washer, SS	6
HK024	3/8" Split Lock Washer, SS	6
HK094	3/8" x 1-1/2" Button Head Bolt, Torx, Pin-in, SS	19
HK094	3/8" x 7/8" OD Flat Washer, SS	19
HK094	3/8" Split Lock Washer, SS	19
HK094	3/8" x 7/16" Barrel Nut, SS	19
HK128	1/2" x 3" Tapcon Concrete Anchors	12



Music Panel Assembly Instructions - 1000333S, Surface Mount Model

NOTES PRIOR TO CONSTRUCTION:

- Use appropriate equipment to lift and move the play equipment.
- Check local codes and requirements prior to digging or installing any equipment.



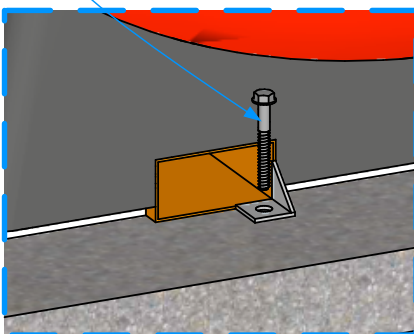
TYPICAL 4" CONCRETE SLAB DETAIL (NOT TO SCALE)
CHECK LOCAL SOIL CONDITIONS.



EXAMPLE OF
COMPONENT



ANCHOR BOLT
SEE CHART



Music Panel Assembly Instructions - 1000333S, Surface Mount Model

NOTE: Read installation instructions thoroughly before starting installation process.

Step 3: Lay out the area and prepare the site for install. Concrete must be installed over a solid, level base. Check local soil condition and codes. See product installation instructions for minimum use zone requirements to ensure proper spacing and adequate surfacing area.

Step 4: Pour a concrete base for the component. Refer to the typical concrete slab section in this document. The concrete should be flush with the ground level. Allow time for the concrete to completely cure before continuing.

Step 5: Using an appropriate forklift or boom, place component into final installation location. See the hardware recommendation for information on anchoring equipment down to your concrete slab. Refer to the surfacing manufacturer for installation of an approved impact attenuating play surface around the component with a minimum use zone in every direction.

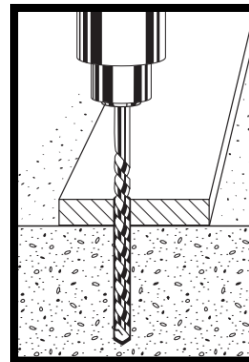
Step 6: Locate your anchor bolts, supplied. Using the proper standard drill bit size noted in the installation table, drill the concrete to the appropriate hole depth through the mounting holes.

Step 7: Insert the anchor bolt into the hole and tighten until the bolt is fully seated. Do NOT over tighten the anchor bolts.

Anchor Bolt Installation:

Anchor Bolt Size	ANSI Standard Drill Bit Diameter	Anchor Head (Socket Size)	Minimum Embedment	Hole Depth
1/2" x 3"	7/16"	3/4"	2 1/2"	3 1/2"

Step 1: Drill



Step 2: Anchor

